



# THE SOUTHWESTERN LIMITED

VOLUME 1  
NUMBER 4

APRIL  
1982

CHRISTOPHER WATT  
PRESIDENT

HILLY LAZARUS  
TEMPORARY EDITOR



## HARTFORD 4U IN 1982

Our own TTOS National Annual Convention will be held on the east coast this summer and it is shaping up to be an excellent event. Mark your calendars for the weekend of August 6-7-8 and plan for a family vacation trip to Hartford, CT and the eastern seaboard. Hartford is toy train country and is also the hub of tourist country for southern New England. Within a short drive, train ride or bus journey, you can be in New York City, Boston, Plymouth Rock, Lexington and Concord, Salem, Washington D.C. or even Philadelphia.

In and around Hartford, you can see the Mark Twain house, Wadsworth Athenium, Colt Museum, Steamtown USA, Edaville Railroad and the Branford Trolley Museum. It is a short drive to see the old Ives factory in Bridgeport and very close to the famous Erector Square where Gilbert made American Flyer trains and many Erector and Gilbert toys in New Haven. Take your family along to visit the historic treasures of old

colonial America and be sure to compare the clam chowder of Boston to that of Coney Island. The kids should see the Statue of Liberty and all the great museums and tourist attractions of New York City. If you have the time, go to Ben Franklin country at Philadelphia and see where the Declaration of Independence was put together.

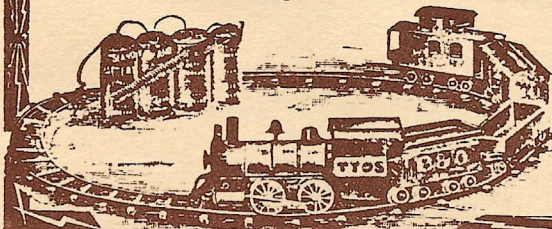
The inland weather in August can be humid so take along hot weather clothing, but the coastal communities are cooled by the ocean breezes and are beautiful in the summer so take along a sweater also. Plenty of places for swimming and fishing and boating so prepare yourself for a lot of activities and family fun.

For more specific tourist stuff, contact your automobile club or the Chambers of Commerce in the areas you wish to visit. Convention registration information will be forthcoming from the TTOS National Office.

### Electrical Toys for Boys

#### Real Scientific Novelties

Practical, Complete, Harmless, Durable  
Just the Things for Christmas



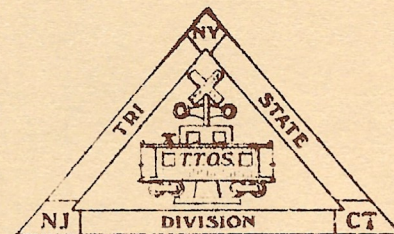
### Every Boy a Railroad President

THERE'S great fun owning a railroad and bossing the job. Our Models of Locomotives, Trains, Trolley Cars, Dynamos, Lamps, etc., are practical and durable inventions. They amuse and instruct. They point many a boy to a useful career. Equipped with dry batteries, no acids or liquids used, perfectly safe and harmless. Prices from \$1 up.

Illustrated Booklet Sent Free

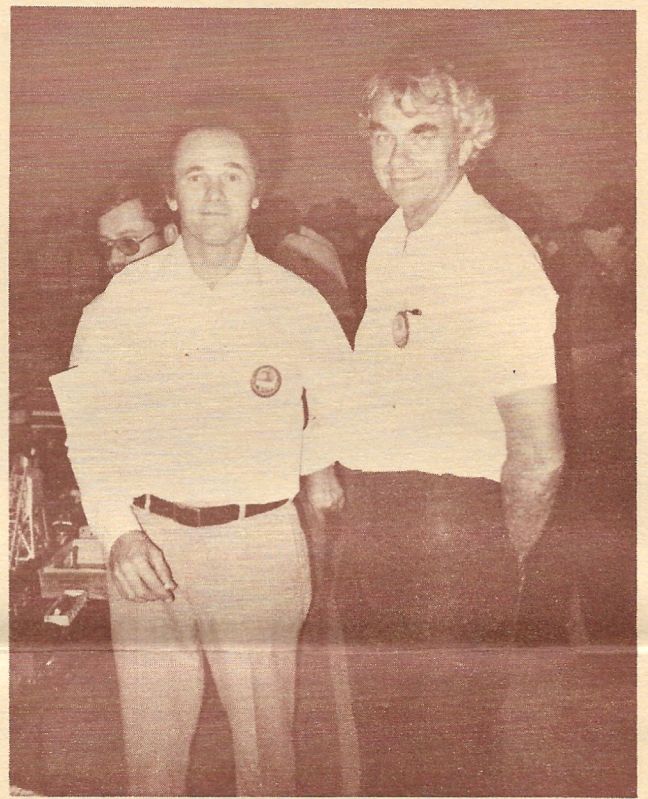
**THE CARLISLE & FINCH COMPANY**  
239 E. Clifton Ave., Cincinnati, O.

Largest Manufacturers Electrical Novelties in the World.





CHUCK STONE & JOHN BENTLEY



TOM McCARDLE & CHARLES LICHA

MARCH MEETING IN REVIEW

Again, we had over 60 guests at our last meeting. Our guest pass system is so successful that we are averaging over ten new members joining at each meeting. This success is not without its problems. We did have at least one guest selling at a table and another selling at the auction, both of which are no-nos, so PLEASE TELL YOUR GUESTS THAT THEY ARE INVITED TO TTOS to observe but that any transactions must be done by you, the member. Our guests are NOT PERMITTED TO BUY OR SELL.

APRIL MEETING

Our All-Day Meet is scheduled for Saturday, April 17th. Doors open at 9 A.M. We will try to have 75 tables, 10 more than usual. Attendance is free but there will be a charge for the tables, as is our custom at the all-day meets. We ask that all members, including dealers, try to limit yourselves to one table. Second tables will be sold if we have enough tables. No tables will be reserved. First come--first served.

One member asked for his dues back at the last meeting as he couldn't ever arrive in time to get a table. He said "I can never get a table at "your" club; and all along it seemed that this is our club. Remember that all members are welcome to come and express their views at Board meetings.



WIDE GAUGE      NARROW GAUGE      WIDE GAUGE

Plans are now being made for our next Cal-Stewart meet. The names of all those who worked at our last convention were listed in earlier editions of this SW LTD. If your name was not listed, this year is your turn to volunteer to work at Cal-Stewart. New members are most welcome to participate organizing and running the greatest toy train meet this side of the Mississippi.

Ah come on fellows, help out with our monthly newsletter. Other than the few HOT BOX ADS, no one at all has contributed a single article, picture, news item or rare piece of toy train paper to reproduce for this issue. The one cartoon is from Bob Thon who is a member of the North-Eastern Division. Bring your camera to the all-day meet in April. We badly need some new pictures. Call Hilly to volunteer: (213) 762-3652.

## INSTRUCTIONS FOR OPERATING HAFNER TRAINS

### TRACK LAYOUT

Assemble the sections of track by inserting the pins of one section into the ends of the rails of the next section. Push the sections together as far as they will go. **DO NOT** squeeze the rails together or spread them, as this will change the gauge of the track and will slow up your train in running. Wipe dirt and oil from rails with damp cloth after oiling train. **CLEAN RAILS** mean a fast running train. **DO THIS AT LEAST ONCE A WEEK.**

### TRAIN

Oil all gears and pinions of engine with a light oil. **PULL UP** on the brake lever in roof of engine and place engine on track. Couple all cars together and push **DOWN** on brake lever and train is ready to operate. Train will run faster after locomotive has been broken in by running a few times. If locomotive runs too fast, do not wind up completely.

**THIS TRAIN HAS BEEN MADE TO GIVE YOU LONG AND EFFICIENT SERVICE. HANDLE IT WITH CARE TO AVOID ANY DAMAGE WHICH MIGHT RESULT FROM A FALL OR OTHER ROUGH HANDLING.**

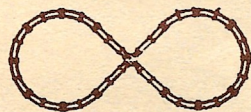
We show below suggested track layouts which can be made with the same amount of track as listed under each layout.



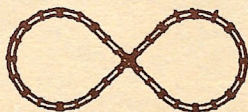
4 Large Curved Track  
2 Straight Track



8 Curved Track  
6 Straight Track



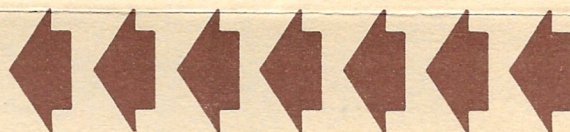
12 Curved Track  
4 Straight Track  
1 Crossover Track



6 Large Curved Track  
4 Straight Track  
1 Crossover Track

Toy Train Operating Society

CIRCA 1950 INSTRUCTION SHEET THAT CAME WITH HAFNER TRAIN SETS.



DOOMEY WITH GALLBLADDER ON THE LEFT. DOOMEY WITHOUT GALLBLADDER ON THE RIGHT. REPLACEMENT MGOEL ENGINEERING WORKS PARTS IN FOREGROUND.

**HAFNER MANUFACTURING COMPANY**  
1010 N. KOLMAR AVENUE  
CHICAGO 51, ILL.

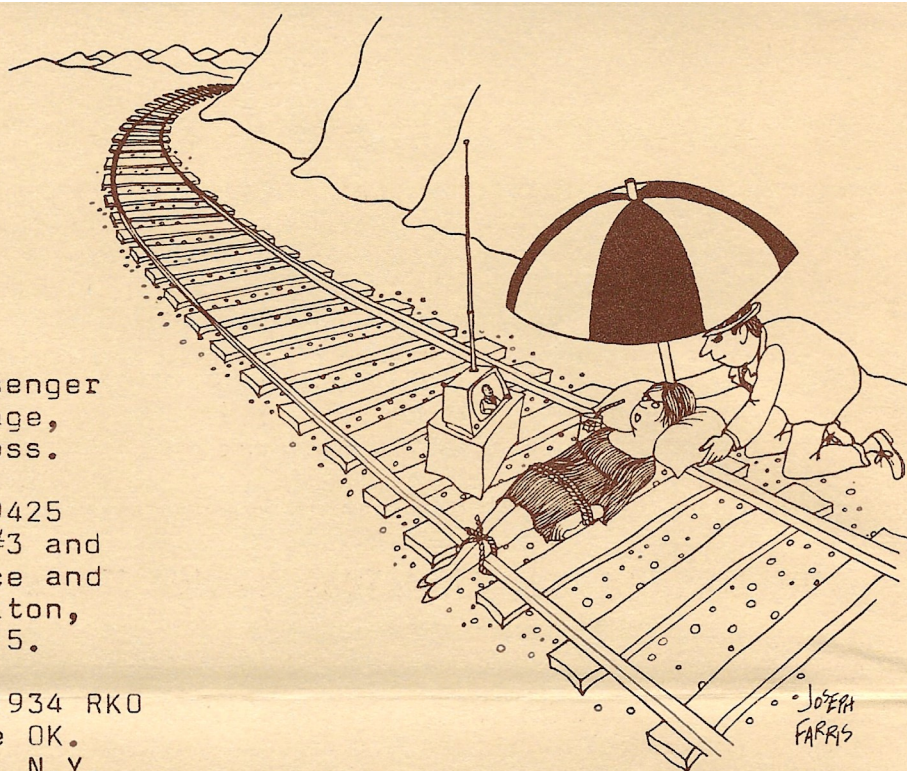
# HOT BOX ADS

**TRADE:** My American Flyer "O" ga. #3015 enamelled locomotive for your #1097 lithographed engine. I'll be at the all-day meet in April. Bob Verre, Box 2903D, Pasadena, CA 91105.

**WANTED:** Complete set of PENN passenger cars (all 6) or Lionel 9570 Baggage, 9572 Molly Pitcher, 9573 Betsy Ross. Also want Lionel 9429 Cowen Box, 9430 Cowen Box, 9431 Cowen Box, 9425 British Columbia Box, 9450 FARR #3 and GN Cattle Car. Please state price and condition first letter. Bill Hylton, 1631 16th. Place, Delano, CA 93215.

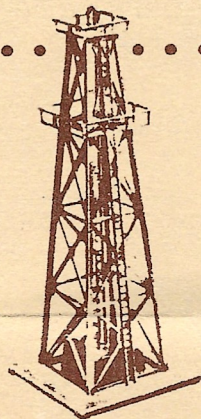
**WANTED:** Original or copy of the 1934 RKO film "SILVER STREAK". Video tape OK. Bob Thon, P.O. Box 576, Walworth, N.Y. 14568. (315) 597-6179.

**WANTED:** Used, rusted, etc. bases, bodies and roofs for the Lionel Hiawatha, U.P., Rail Chief etc., passenger cars. Also need good used linkage for the Lionel 1656 Switcher. Call Marty Ryzak, (213) 244-3716.



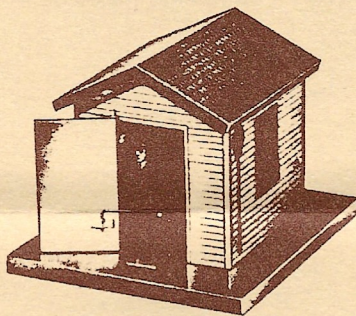
*"I must admit, in your own sick way, you are considerate."*

Cartoon submitted by Bob Thon

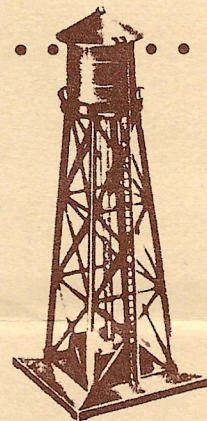


**Oil Gusher.** Want to own an oil well? Simply attach to transformer and watch the "oil" gush thru the transparent tube to the top of the tower. Made of resilient, shatterproof plastic—Stands 13" high. No. 109—\$4.95

Made by COLBER



**Crossing Gateman.** Here's "Diligent Dan" the operating gateman. Press the button and out he comes—release, and back to the shack goes Dan. Easy to set up . . . Lock-on, button and 3 feet wire included. All metal and handsomely painted in 4 bright colors. No. 101—\$3.95



**Water Tower.** Exciting new item! "Water" actually bubbles continuously up the transparent pipe. Constructed of sturdy, shatterproof plastic, brightly colored in red and silver—12 1/2" high. No. 108—\$4.95

**Truss Bridge.** Makes a striking addition to your layout. This authentic copy of the Warren Truss Bridge is 24" long, made of silver colored, heavy gauge, rolled steel—realistically detailed. No. 104—\$1.95



**Boulevard Lamps.** Use them to brighten up your railroad village. Made of sturdy plastic, they're a welcome addition to every layout. No. 100G—in green, No. 100S—in silver, 75c each—gift package of 4—\$2.95