



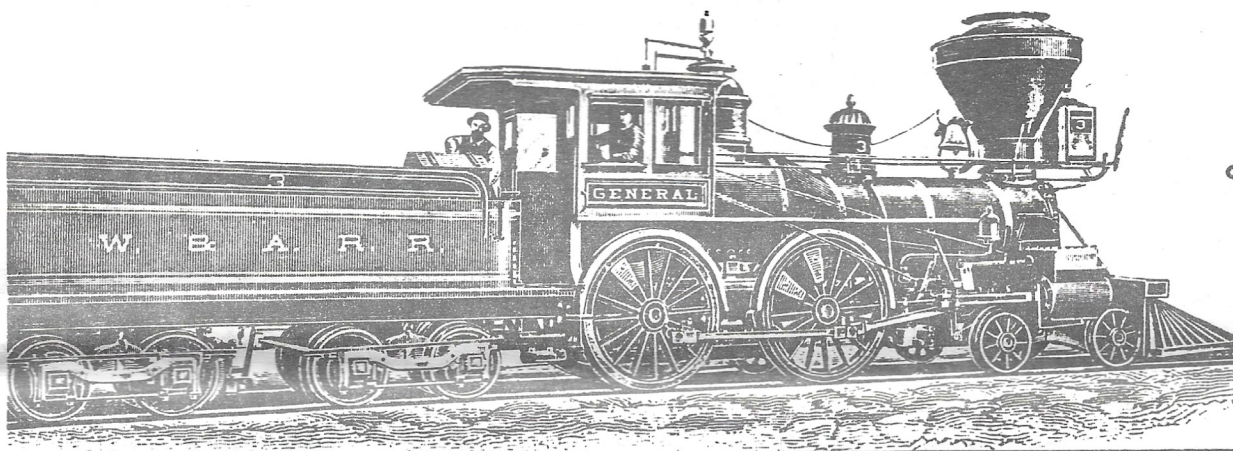
THE SOUTHWESTERN LIMITED

VOLUME 4
NUMBER 2

FEBRUARY
1985

RALPH N. JOHNSON
PRESIDENT

HILLY LAZARUS
TEMPORARY EDITOR



THE GENERAL. This is perhaps the most famous locomotive in American history. It was involved in one of the most exciting adventures of the Civil War. She was built in 1855 by Rogers for the Western & Atlantic Railroad (hence, the W. & A. R. R.). For many years, the GENERAL was exhibited in the city of Chattanooga. Supposedly it is now on exhibit in Atlanta, Georgia, the homebase of our T.T.O.S. Mid South Division. How close did LIONEL come in its tinsplate version of the GENERAL?

KEEP THOSE CARDS AND LETTERS COMING. Fellows (and ladies too), we're out of fresh material for our newsletter. How about helping out your tired old temporary editor and write something for publication in these pages. If you can't write, then send in some clippings, cartoons, news items, pictures, etc. We don't even have any classified ads this month. You sent in a lot of them when we provided post cards for the purpose. Really, you can use your own post cards and do the same thing, and I wish you would. Send SOMETHING to: Hilly Lazarus, Temporary Editor, 14547 Titus Street, Suite 207, Panorama City, CA 91402. Helllllllp!

MACHINES NEEDED. Norma and Joan are having trouble with the old IBM typewriter at the National Office and sure could use a good one so, if you have an extra one that is dormant, how about donating it to the office? They could also use a photocopy machine. Anything dependable. Currently, TTOS does not have one at all. Call TTOS, (818) 578-0673. Our Southwestern Division typewriter is also broken and 40 years old. We need a top of the line new one, perhaps with some word processing capabilities. Does anyone have a connection? If not, we'll have to buy one at retail---(Oh my gosh, you're kidding). No kidding!

PRESIDENT'S LETTER

Dear Fellow Members:

I stated, in my January letter, that I was going to elaborate on the other five clubs in the fifty mile radius of Los Angeles, and I'll do it now.

On the first Friday of the Month, the Western Division of the Train Collectors Association (T.C.A.) meets in Glendale at the Women's Tuesday Afternoon Club, located at 319 North Central Avenue. Trading starts at 6 P.M. and the President is John Thousand.

On the second Friday evening of most months we hold our own T.T.O.S. Southwestern Division meetings. The exceptions are April and September when we hold all-day meets on Saturday and the second weekend in November when we take over the Pasadena Convention Center for our giant 2½ day "Cal-Stewart" meet.

On the third Friday of every month, the San Fernando Valley Toy Train Club meet in the Saint Anne Malekite Church at 11211 Moorpark Avenue in North Hollywood at 6 P.M. Jerry Butler is in charge.

Marie Lee is the President of the Model Train Association (M.T.A.) and their meetings are on the fourth Friday of the month at the Ramona Grammer School, Clark and Laurel Streets, in Bellflower.

The T.T.O.S. Southern Pacific Division meets at the Elk's Club in Anaheim on the fourth Sunday of each month. The address is 3291 East Miraloma Avenue. Steve Latta presides at 12 noon.

There is one more club that I must mention. The Southern California Toy Collectors Club meets in Alhambra at the Progressive Savings & Loan Association Building at 2121 West Main Street. The President is Manny Penolosa and they meet at 7 P.M. (Dates not available).

I do hope that we can all enjoy these hobby clubs and that this information has helped you in deciding to visit them.

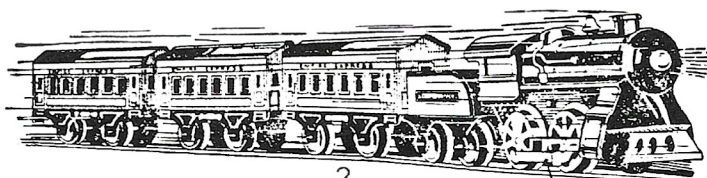
T.T.O.S. Southwestern Division #1 will continue to cooperate with all of the clubs that I have mentioned.

I know that our Board Of Directors will support and help me to make our own T.T.O.S. Southwestern Division a more friendly club. In the past we have been too commercial, so please work with me to help change this situation to add more flavor to our activities beyond wheeling & dealing.

In closing I want you to know that any member is always invited to attend our Board of Directors meetings. We usually meet monthly about a week or so before our regular Divisional meetings. Give me a call if you want to come and I'll give you the time and place. Remember, this is your club. We must also support our National Officers so that our National Society can grow just as we are in Southwestern Division #1.

Most Sincerely, your President,

Ralph M. Johnson



SOUTHWESTERN DIVISION LEADERSHIP FOR 1985

PRESIDENT: Ralph N. Johnson. VICE PRESIDENT: Nick Barone. RECORDING SECRETARY: Gary Keck. TREASURER: David Weiss. MEMBERSHIP SECRETARY: Joan Marlatt. EDITOR & MEMBERSHIP CHAIRMAN: Hilly Lazarus. PAST PRESIDENT: Joseph E. Lovi. BOARD OF DIRECTORS: Roy Bell, Jerry Blaine, Jim Dutcher, Bob Caplan, Harold Harman, Don Huth, Bruce Lazarus, Sam Mattes, Robert Wall, Christopher Watt, and Robert Ziegler, III.

RAFFLE COMMITTEE NEWS

Any children of members who wish to sell raffle tickets at our monthly meetings, please see Roy Bell or Jerry Blaine on the evening of the meeting. Children under 16 are eligible and will be paid a portion of the sales for their efforts. Sales will be rotated among any children willing to sell. Thank you. (Signed) Roy Bell.

BAILEY'S BALIWICK

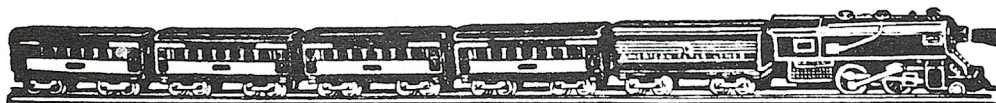
Like to read classified ads about toy trains? Well, we've got some good news for you. Al Bailey has agreed to become the "Order Board Editor" for the T.T.O.S. Bulletin and has taken over those duties from our Office Manager, Norma Marlatt. Al will save the club some money by freeing-up Norma's time and having the "Order Board" camera-ready for the printer, so the savings will be spent on improving that publication. All of us can help improve this classified ad section simply by writing and sending in our ads to Al for International distribution. PLEASE HELP. WRITE ONE NOW. REALLY. DO IT TODAY, PLEASE. IT IS IMPORTANT. (Please print or type it).

BIG MEET

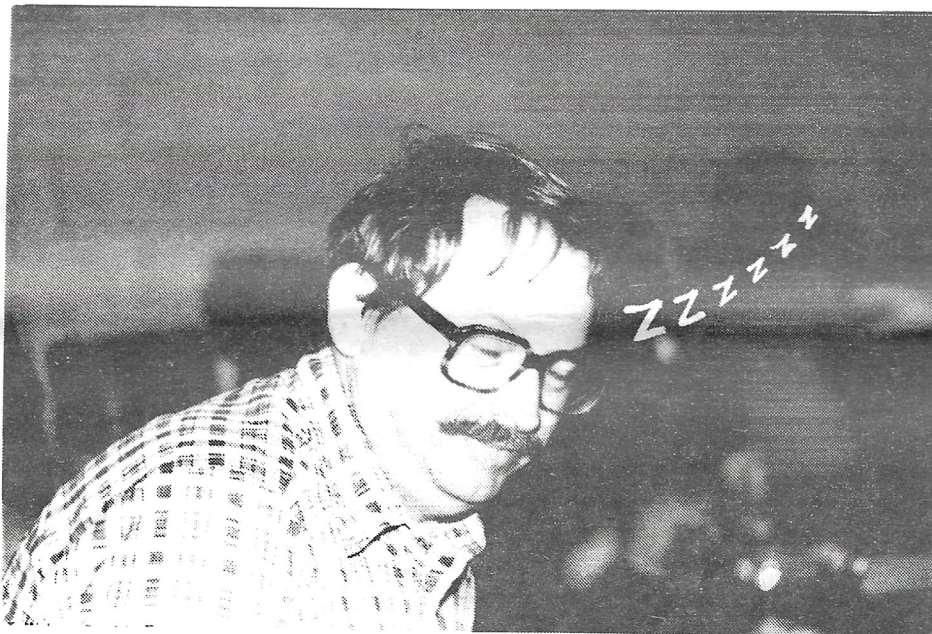
As promised, our brand new T.T.O.S. Cen-Cal Division has scheduled their big INAUGURATION MEET for March 30th, a Saturday, in Tulare, CA, which is about halfway between Bakersfield and Fresno. Their trial meet last summer was great and several Southwestern Division members attended and won door prizes and raffle prizes. This new Division has Fred Nix as its President---spouse of our S.W. Member, Tami Jo Nix. The meet will be held in the Tulare Community Center, 830 S. Blackstone Street, which is just off Freeway 99. Set up is at 9 A.M. and trading starts at 10 A.M. Admission is \$1 and tables are \$5 which includes one admission per table. Dealers and Sellers are invited as Cen-Cal has a lot of greenhorns with a lot of greenbacks just itching to be spent. They hope to see Vinnie Rogers, Ed White, Gary Keck and the rest of us so let's not disappoint them. To reserve your tables, send your money to Fred Nix soon. Look him up in the T.T.O.S. directory.

CAL-NEVA

We have a quiet small Division of T.T.O.S. at the North-East end of San Francisco Bay which has held an occasional meeting around Oakland in years past. This quiet Division is about to blossom under brand new leadership and a big recruitment effort. Look for a giant RESURRECTION MEET sometime in February or March around Oakland, CA. Let's see if we can help our Cal-Neva Division in their forward March. Our new National President, Hilly Lazarus, plans to attend and help out. Anyone want to go along for the ride and help make it a better meet for everyone?

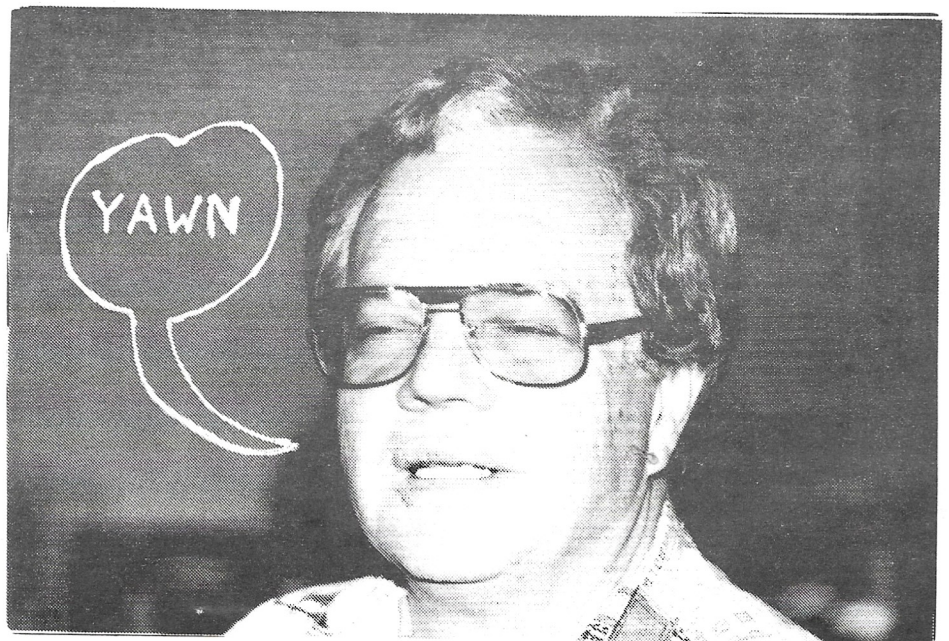


ERNIE RENN WAS OVERHEARD TO SAY, "BOY, I SURE WISH MERV LEW OR ROY BELL WOULD HELP ME TAKE SOME PICTURES SOMETIMES. I GET SO DARN TIRED.



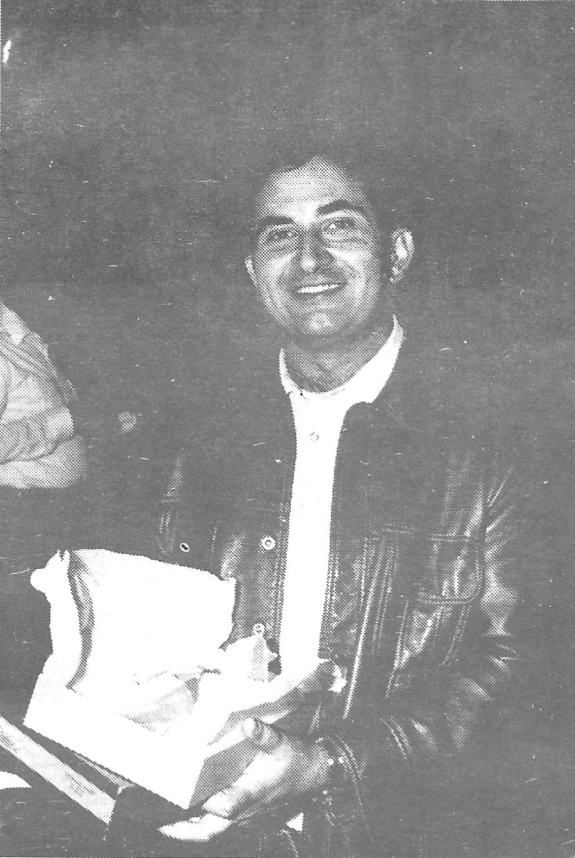
DAVID NISSEN WAS CAUGHT IN A VERY SATISFACTORY NAP AFTER COMPLETING ANOTHER ROUND OF INPUT INTO THE COMPUTER FOR OUR MEMBERSHIP ROSTER.

MYRON ERICKSON WAS RECENTLY LAMENTING HIS RETIREMENT AS THE VICE PRESIDENT OF T.C.A. WESTERN DIVISION.

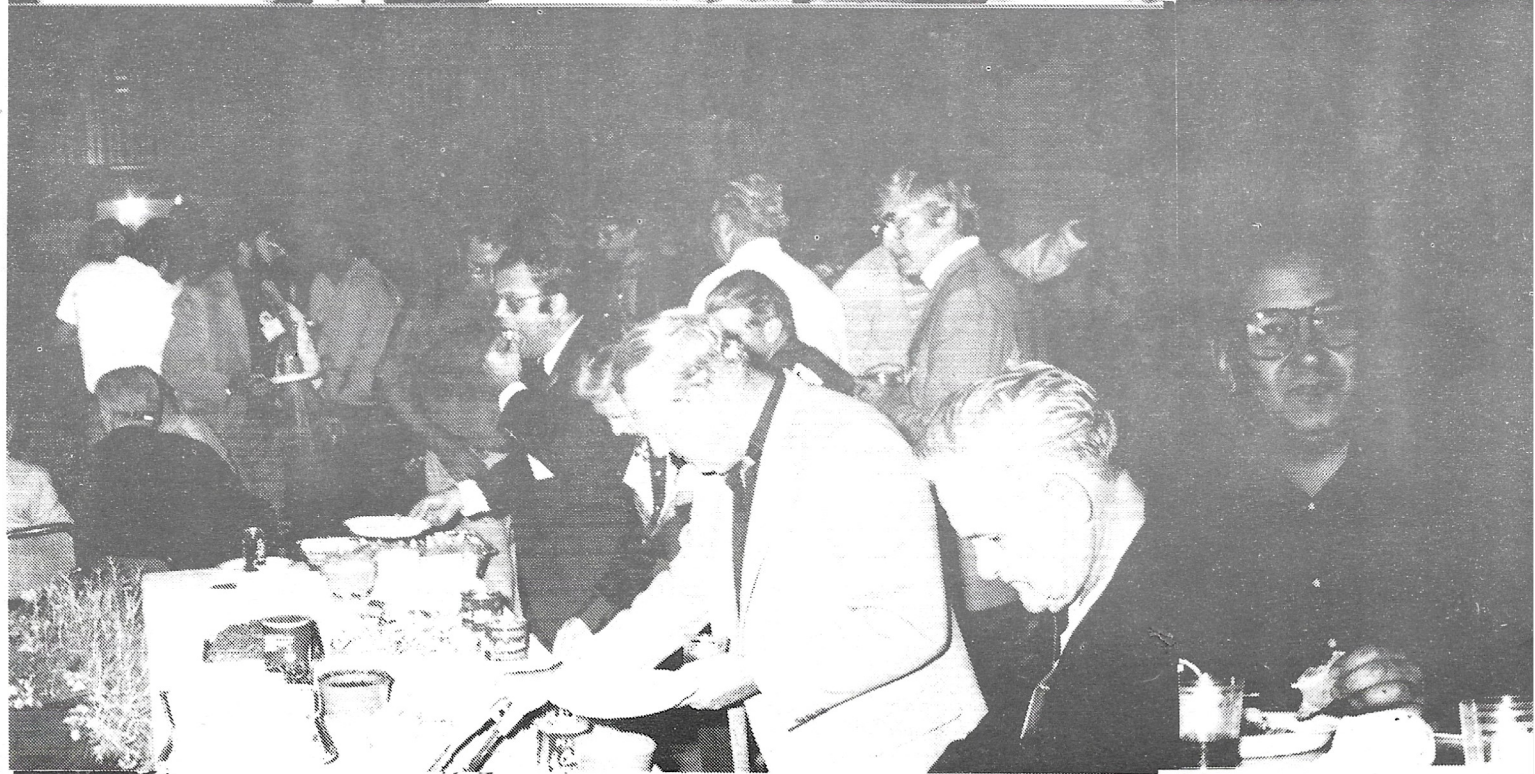
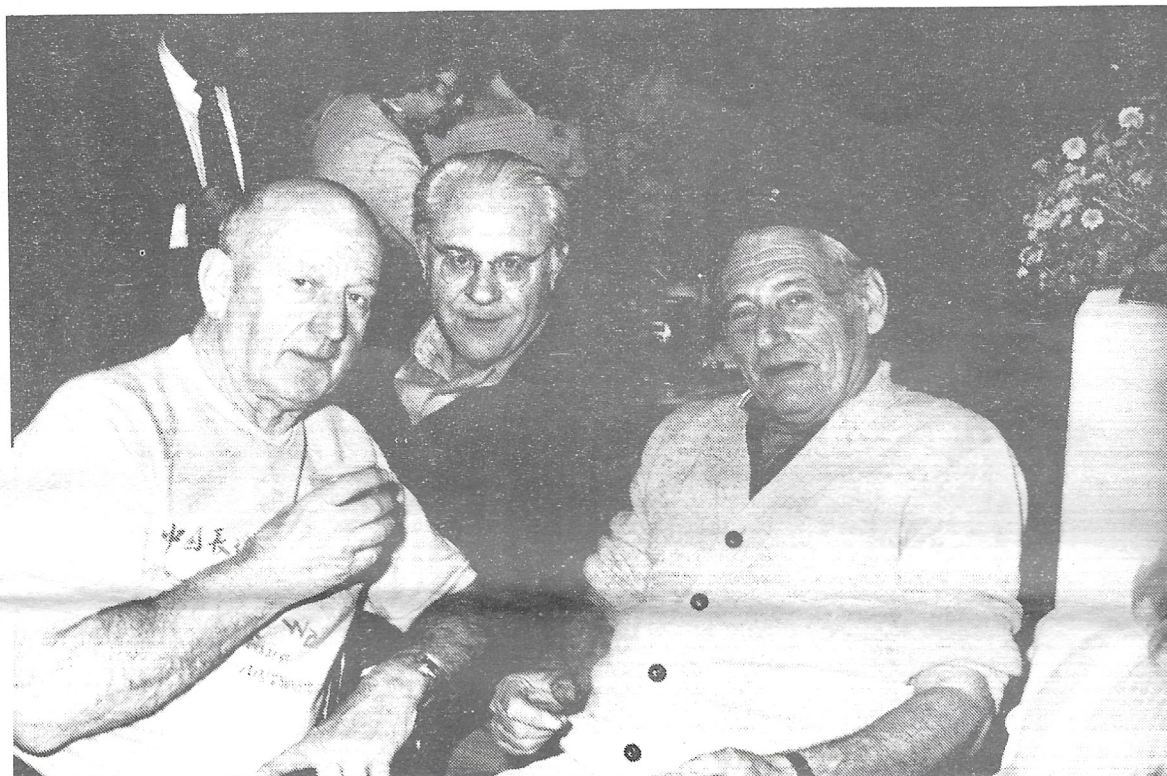




CAL-STEWART
WINNERS
AND
PRIZE
WINNERS

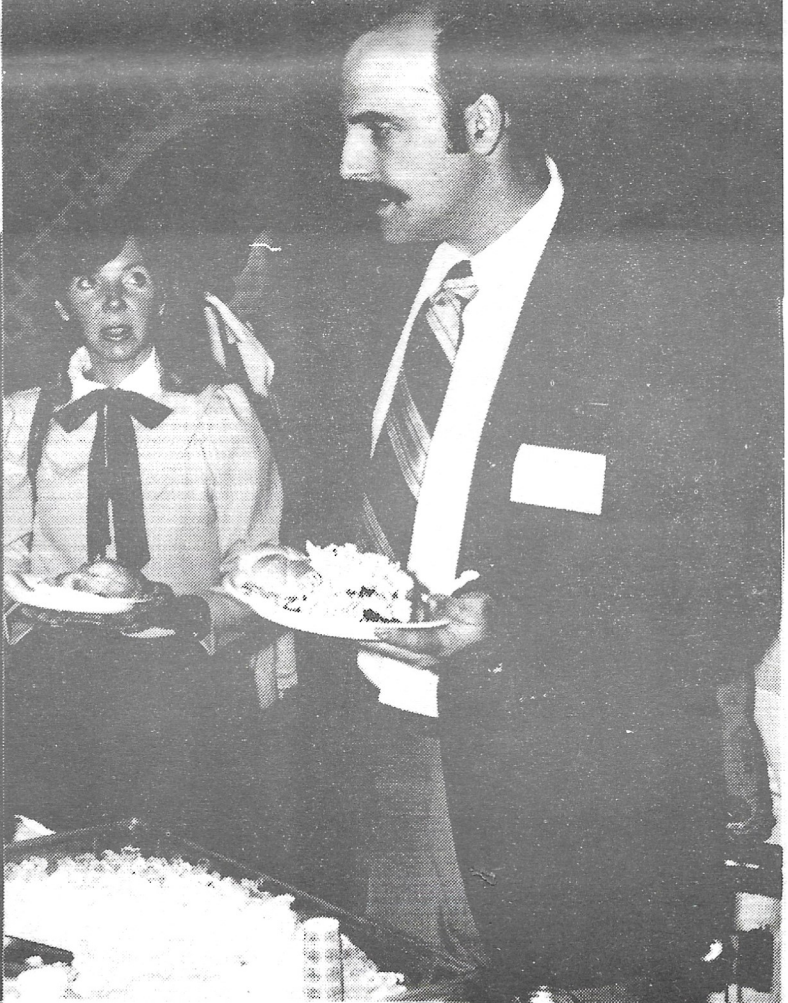


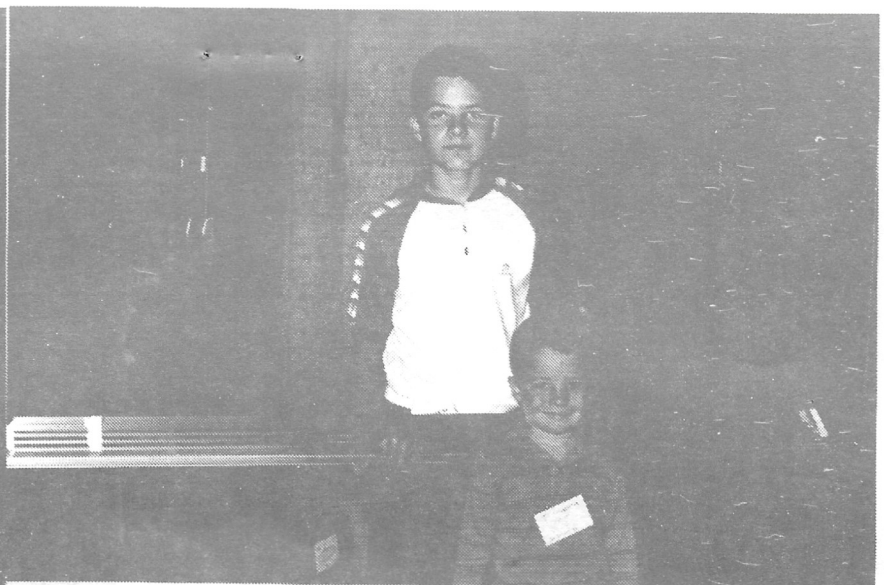
The Cal-Stewart Fun Begins



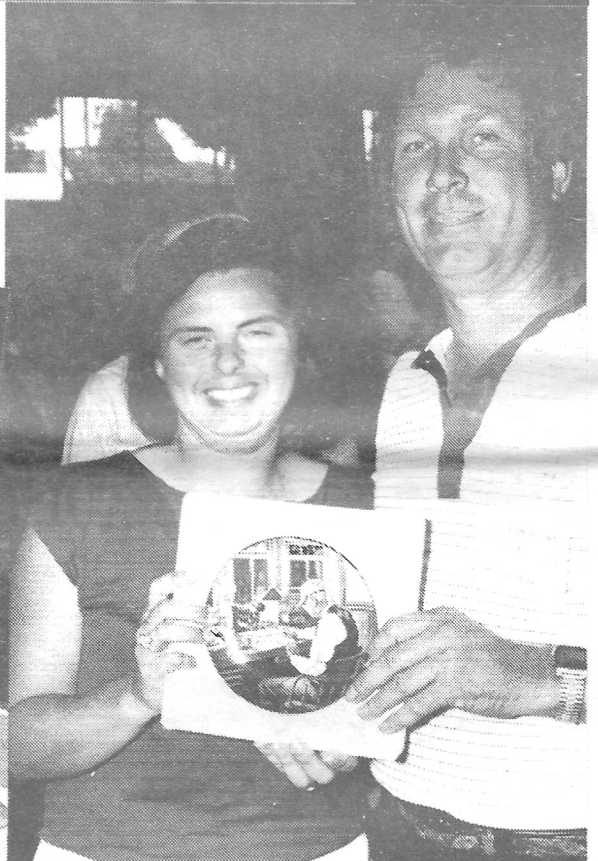


JOHN KING
MEMORIAL
COCKTAIL
AND
RAFFLE
PARTY





CAL-STEWART
RAFFLE
PRIZE
WINNERS



SPECIAL MEET NOTICE: The Train Collector's Association has invited us to attend their open house meet on Sunday, February 3rd at 12 noon at the Tuesday Afternoon club, 319 N. Central Ave., Glendale. That is just four blocks South of the Ventura Freeway #134. Tables are \$2 with a limit of two per person. For information, call John Thousand (see your directory).

T.T.O.S. SOUTHWESTERN DIVISION FEBRUARY MEET NOTICE. We will hold our regular monthly meeting at 6 P.M. in the Arcadia Masonic Hall, 50 West Duarte Road, Arcadia, as usual. Hand out our guest passes and reinvite a former guest to join. BE ON YOUR TOES. This is the night before the National Board of Directors Meeting in Pasadena and we will have a large number of Presidents of other Divisions joining us as our guests. Please make them feel welcome.

NATIONAL BOARD OF DIRECTORS MEETING. Legally, all T.T.O.S. members are welcome to attend. Practically, this can not be done as the room in the Pasadena Athletic club only holds about 50 people. This is an important meeting and you might like to attend at 12 noon, 25 W. Walnut St. Pasadena. To reserve one of the limited spots, be sure to call Norma Marlatt, our Business Manager, and see if there is still room. (818) 578-0673. Bring some cookies. Oh yes, the date and time are Saturday, February 9th.

SNOWBIRD. That is the place selected for our 1985 convention. It is a little outside of the Salt Lake City basin and is a beautiful spot. We had a convention there about 7 years ago. It is a resort and is both restful and high altitutte.. Come prepared. Arrangements are now being set for transportation and entertainment. Supposedly, there is a modern arial tramway (funicular, or hanging on a cable) similar to the Palm Springs Tramway. Sounds like fun. Mark your calendar for the first weekend in August and let's go! Good time to see the Mormon Tabernacle and perhaps take a ride on the Cumbres and Toltec Railway in Colorado and New Mexico.

HELPFUL REPAIR HINTS, Copyright 1984 by JIM WEATHERFORD.

The rubber coated pick-up wire used on your operating cars often has to be replaced due to aging. I use Beldon wire #8890 which sells for about \$12 for the 100 foot roll. This is a very flexible, black, single conductor, rubber coated stranded wire and serves very well for repairs. I'll be glad to sell smaller lengths at cost for those of you who need it.

Ed Karper regularly repairs and restores Lionel locomotives and has found what he says is an inexpensive 'good match' spray paint. You can find ZYNOLYTE flat enamel "Licorice Black" #D745 at Builder's Emporeum.

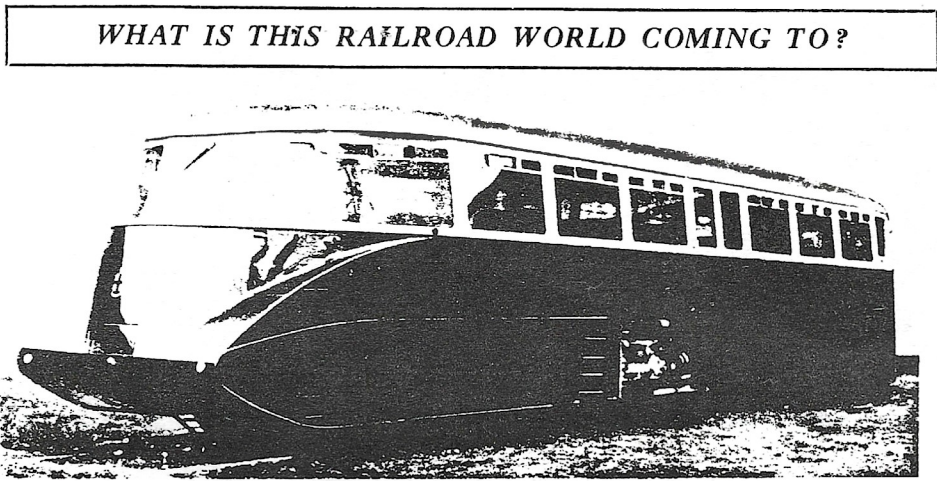
If you are having problems fixing something, drop me a note and, if I can solve your problem, I'll write another HELPFUL REPAIR HINT article for publication explaining the solution. My address is: James W. Weatherford, 6621 Cartwright St., San Diego, CA 92120.

CAL-STEWART. Scheduled for February 22-24 in Santa Clara, California. If you lost your registration form, better call Don Church in Oakland. Do it now as fees accelerate rapidly. (415) 547-5228. You'll come!

T.T.O.S. NATIONAL DUES. Did you remember to send your \$18 to Pasadena before the delinquent deadline of February 1? If not, it will now cost you an extra \$5 for reinstatement. Remember, your Southwestern Membership automatically is suspended until your National Dues are paid, so if you intend to come to meetings, better take care of the dues matter immediately. Send \$23 to the National Office. Address is in every TTOS Bulletin.

BUS? NO, IT'S A "RAIL-CAR"

A one-car, streamlined, Diesel engine that is a cross between a railroad train, a trolley car and a motor bus. It was built for the Great Western Railway and runs between Reading and Slough, England, with so many stops its service is like that of a trolley. The Diesel engine is similar to the one now used by most London motor buses. It does ten miles to a gallon. Its only resemblance to a train is that it does run on track.



WHAT IS THIS RAILROAD WORLD COMING TO?

RHEINGOLD EXPRESS IS PAINTED VIOLET

This is Europe's latest in luxury on wheels.

The train is the German Rheingold Express, operating from the Hook of Holland, through the Rhine river valley, to Basle and Lucerne in Switzerland.

The exterior of the train is as gay-looking as brilliant paint can make it. The cars themselves are bright violet. The window frames are painted in cream. The roof is silver-gray.

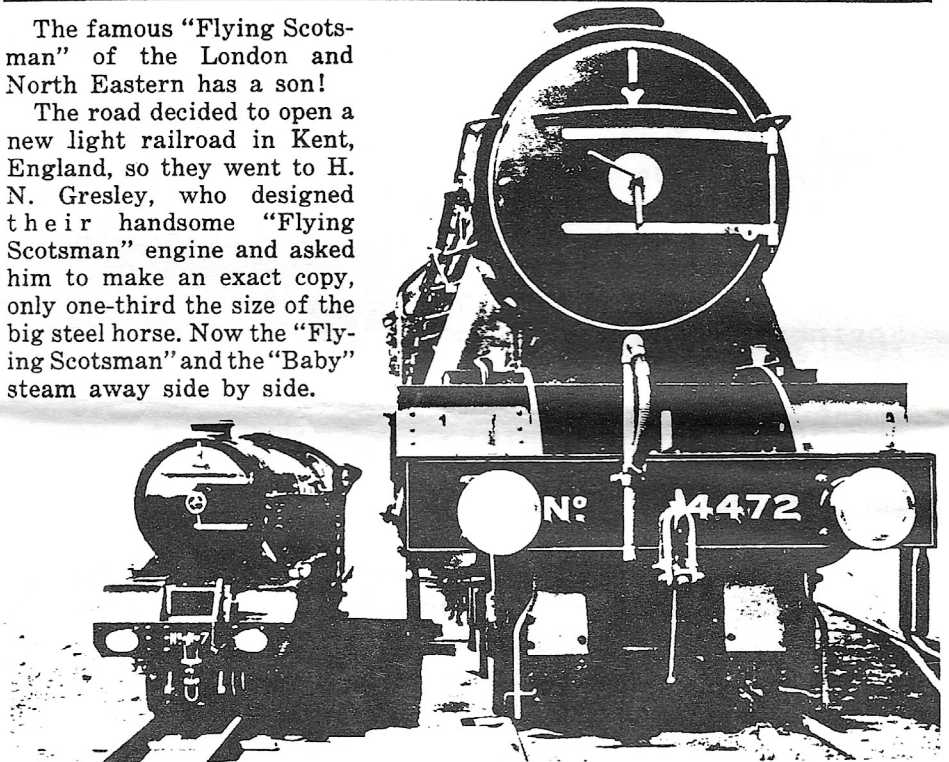
The salon cars are fitted up as artistically as milady's boudoir. There are no dining cars, each two cars being served by a separate kitchen. All meals are served on the tables between each pair of chairs.

The cars are all steel and the train averages 62 m.p.h. on its long run.

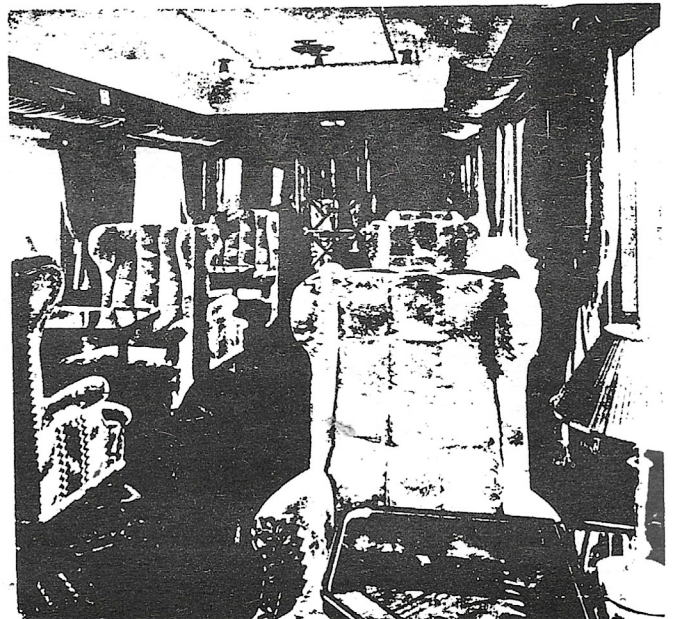
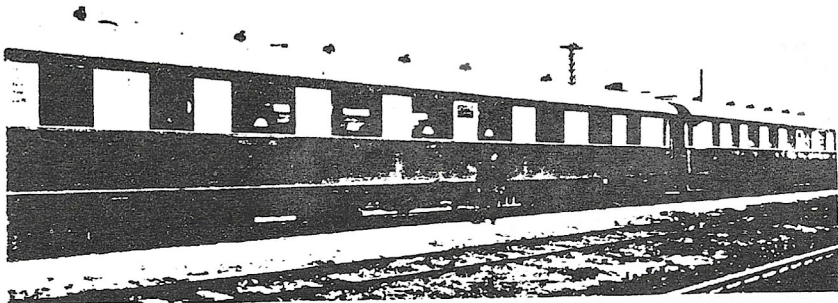


The famous "Flying Scotsman" of the London and North Eastern has a son!

The road decided to open a new light railroad in Kent, England, so they went to H. N. Gresley, who designed their handsome "Flying Scotsman" engine and asked him to make an exact copy, only one-third the size of the big steel horse. Now the "Flying Scotsman" and the "Baby" steam away side by side.



THIS LOOKS LIKE A FATHER-SON PICTURE



THIS PAGE IS FROM THE MODEL
BUILDER MAGAZINE, OF THE
LIONEL CORPORATION, ISSUED
JANUARY/FEBRUARY OF 1937.

MEMBERSHIP INFORMATION: In the December 1984 Southwestern Limited, I asked for your help in promoting new recruits to T.T.O.S. and our Division. You really came through for our Society. At that time, we had about 650 S.W. members on the books with the hopes of reaching 700 or 750 by the end of our fiscal year on June 30, 1985. Well, a lot of old members have rejoined and we've also gained new members so that, at last count on January 11th, we have 687 members, well on our way to the established goal. THANKS.

Let's welcome aboard the following new T.T.O.S. members, many of which have also joined our Southwestern Division:

Ray Loftis #7267	Richard Capp #7337
Keith Pacey #7279	Rowell Greene #7339
Theo Van Der Kolk #7280	Allan R. Egleston #7340
Lester Gnatz #7281	Albert Hetzel #7340
William Tompkins #7289	Paul J. Morgante, Jr. #7345
Tom Corgey #7290	Willis K. Simonton #7346
James Hunnicutt #7291	Dean M. Gaffner #7349
Robert J. Austin #7295	Roy Severin #7350
Robert W. Briggs #7296	John Crittenden #7352
Gary Walton #7299	Dale M. Hedtke #7354
Mindy Keck #7300	Terry A. Barrett #7362
Robert Wall, Jr., #7303	Scott Flymen #7364
Ronald Barnes #7310	Jan Westman #7365
James T. Shaffer #7317	Daniel McLoughlin #7374
Ernie Holscher #7318	George Reppucci #7376
Virginia Bean #7321	Michael L. Wayne #7377
Gordon Nesbitt #7323	Mitchell A. Stark #7378
Arthur Breker #7327	Robert Seghi #7380
Bill DeBoer #7328	Paul Turney #7381
Gene P. Drury #7329	William H. Schmidt #7382
Thomas Lee #7330	Frank E. Bruno #7383
Michael Rambeau #7331	William P. Mayerson #7384
Charles F. Pitts #7332	Greg Swatniki #7385
John W. Roach #7333	John L. Poole #7387
	Russell L. McCarron #7388
	Michael Lee White #7389
	Jon Dunham #7390
	Carl F. Anderson #7391
	June H. Parker #7433
	Richard Unfreid #7434
	Lawrence A. Hall #7435
	William P. Walker #7436
	Tom Bastian #7411
	Charles A. Reuter #7410
	Robert A. Rotkewicz #7421

PLEASE NOTE THAT THIS LIST IS FOR NEW T.T.O.S. MEMBERS FOR THE JULY THROUGH DECEMBER PERIOD AND DOES NOT INCLUDE JANUARY JOINERS, OF WHICH WE HAD NINE NEW MEMBERS PLUS THREE REINSTATED MEMBERS.

The following T.T.O.S. members have been reinstated by the National Office in the July through December 1984 period:

Tom Hilt #6374	Richard D. Judd #5629
Stephan Kamen #6086	W. Robert MacKay #2658
Douglass Mooers #6093	Eric Solis #1093
Joseph Cooling #829	Darryl Darrow #6145
Ed Harrigan #4731	Richard J. Espinoza #618
Mike Roman #5439	Dave Bruce #4344
Robert J. Phillips #7142	Drake Whitlock #3982

We have lost several members by death and a partial list is: Lee Harris, Chris Kelly, Pete Sala, William Rice and Paden Warren. May they be well remembered.

RESPECTFULLY SUBMITTED, Hilly Lazarus

Southwestern Division No. 1
Toy Train Operating Society

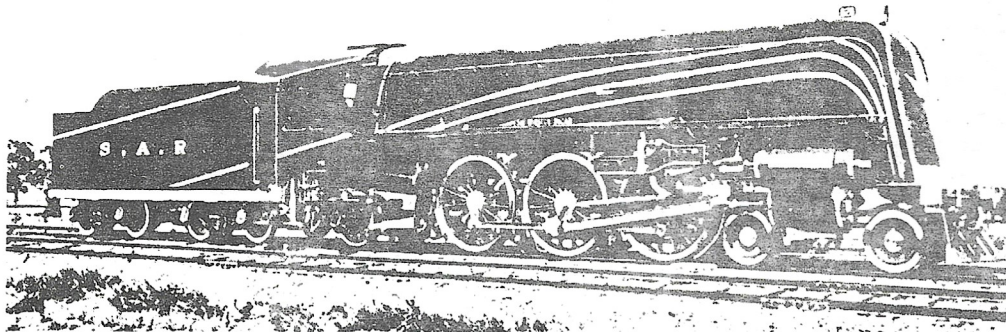
GARY KECK, RECORDING SECRETARY
 1832 Bel Aire Drive
 Burbank, California 91504

BULK RATE
 U.S. POSTAGE
PAID
 Burbank, CA
 Permit No. 273

TIME DATED MATERIAL



Latest Australian Locomotive Is Streamlined MOTOR TRUCK HAULS ENGINE BETWEEN CITIES



This oddly decorated hood on the latest Australian locomotive gives it an appearance of speed. The locomotive is a part of the South Australian Railways' new equipment designed for efficient operation

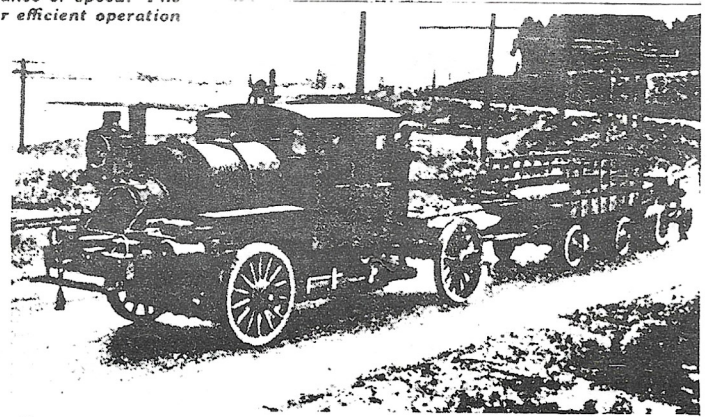
In transporting a donkey engine from Los Angeles to San Pedro, Cal., a distance of approximately 25 miles, a motor tractor was recently called upon to make the haul across country. The locomotive, which is used for construction work and weighs about 18 tons, was blocked up on an underslung wagon coupled to a trailer at the rear of the truck. The trip was made without difficulty, which was partly due to the excellent condition of the road over which the haul was made.

Fitted with a streamline hood designed to reduce wind resistance and increase speed, the latest Australian-built locomotive is claimed to be more efficient in operation than the engine of conventional design. The locomotive is one exhibit in South Australia's centennial celebration, which will include examples of how the public utilities, especially the government railways, are endeavoring to bring equipment to the highest standard of efficiency.

POPULAR
 MECHANICS

←--1/37

9/15--→



Motor Truck Pulling an 18-Ton Engine between Los Angeles and San Pedro, California