

THE SOUTHWESTERN LIMITED



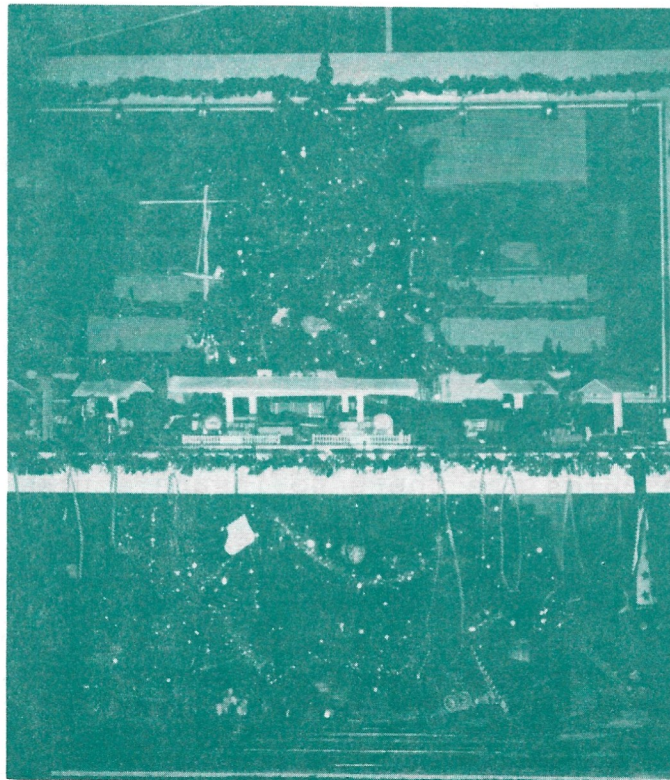
VOLUME 6
NUMBER 3

MARCH
1987

GARY KECK
PRESIDENT

CALVIN SMITH
EDITOR

LAYOUT
PICTURES
OF RIKI
HENNEBERG'S
STANDARD,
O, HO, S, N
GAUGE



MULTI-LEVEL
CHRISTMAS
TREE
LAYOUT.
MORE
PICTURES
ON
PAGE 4

| | | | |
|---|--------|-----------------------------|----|
| President's Message | page 2 | Board of Director's Profile | 11 |
| Letters to the Editor | 3-4 | 1987 Membership Application | 12 |
| SWD's All Clubs Meet | 5 | Table Reservations | 13 |
| SWD's map | 6 | SWD #1 Membership Applicat. | 13 |
| A Train of Thought | 7 | Central California Division | 14 |
| Model Railroaders' Digest contributed by Hilly Lazarus | 8 | NEWS Update Calendar & info | 15 |
| Auction Report | 9 | Order Board copy form | 15 |
| TTOS 1987 Convention Cars | 10 | 1987 SWD #1 Calendar | 16 |

PLEASE NOTE: NEXT SOUTHWESTERN DIVISION #1 MEET WILL BEGIN AT 11 A.M.
SUNDAY, MARCH 15, 1987, AT PICKWICK, 921 Riverside Drive, Burbank, CA.

The Southwestern Limited is the official publication of the Southwestern Division of the Toy Train Operating Society (TTOS). Contributions may be made by mailing articles, photographs, letters, and other related material to: Calvin Smith, editor, 25 South Fair Oaks Avenue, Pasadena, CA 91105. (818) 792-6594. Materials must be received by the first day of the month preceding publication. Original materials will be returned to the sender whenever possible. Please enclose return postage.

PRESIDENT'S MESSAGE

Hi!

Beginning in March, you now will receive a notice of the upcoming meet by a First Class Postcard. This change was made to eliminate some of the current problems with the U. S. Mail.

Also the Southwestern Limited contains the meet schedule for the balance of 1987..

I attended the Cal Stewart Nor Cal Meet which was well attended.. The largest in the history of Nor Cal Cal Stewart. This leads me to remind you that our Cal Stewart meet for November 20-22, 1987 will be here sooner than you think. We will need volunteers to help as in previous years.. This year Sam Mattes, Steve Marinkovich and myself will share the Chairmanship of the meet. If you are interested let us know your availability and interest in helping..

The Board of Directors has voted that the meet for April 1987 be an invitational meet for members of any train club. The meet will be on Sunday, April 12 beginning at 10:00 a.m. Tables will be \$5.00 per table available through Sam Mattes (see details elsewhere).

In the upcoming meets table set up rules and no trading will be strictly enforced. First change will be that no one but sellers may enter the trading hall and then only after checking in at the desk in the lobby for a table assignment. Secondly persons entering in for coffee cannot enter the trading hall from this area until trading time..

All persons must have a badge on at all times in the hall, and finally please remember there is no smoking in the hall.

Remember the rules are there to insure a pleasant and secure environment in which to enjoy trains..



In answer to inquiries regarding advertising in the Southwestern Limited, the Board of Directors approved the following:

1. Starting with the March 1987 issue a half size (1-3/4" wide by 1" deep) business card ad is \$10.00 for the rest of 1987 or one insertion, payable in advance..
2. A double size (1-3/4" wide by 2" deep) ad is \$20.00 for the rest of 1987 or one insertion, payable in advance..

Please send your clean camera ready copy with a check for the size ad and length of time to be printed to Calvin Smith, Editor, Southwestern Limited, 25 S. Fair Oaks Ave., Pasadena, CA 91105. No larger ads will be accepted at this time.. We will still accept other train club meet flyers on a gratis basis as space permits..

See you at the next meet,

Gary

| | |
|---|---|
|  <p>The Train Shack BUY, SELL, TRADE & SERVICE LIONEL • AMERICAN FLYER LGB • MARKLIN • ALL GAUGES • MAIL ORDER 1014 W. BURBANK BLVD. GARY KECK BURBANK, CA 91506 (818) 842-3330</p> | <p>LETTERPRESS • COMPUTER TYPESETTING • OFFSET PUBLICATIONS • COMMERCIAL PRINTING • COPYING</p>  <p>BICKLEY PRINTING COMPANY PASADENA & BURBANK PRINTERS ESTABLISHED IN 1924 (818) 792-6594 CALVIN E. SMITH OWNER 25 SOUTH FAIR OAKS AVENUE PASADENA, CA 91105-1098</p> |
|---|---|

*****N O T I C E*****
I Ralph Johnson would like to let all know that my merchandise is not up for sale. This is to squelch all rumors..

LETTERS TO THE EDITOR

Dear Calvin: Congratulations on a good start as editor! Keep up the good work. I am writing in answer to the letter of A. B. Clark in last month's SW Limited. Mr. Clark feels that there was not enough TOY TRAIN material in our newsletter last year. Obviously, Mr. Clark did not really read the SWL. As editor last year I included features on toy trains which had never before appeared in our paper. The home layouts of Larry Poland and John Sirugo were featured in large photo spreads. The stories included information as to how they were built, operating scheme etc. Members also submitted many articles from newspapers and magazines about modelers and layouts. We featured layout photos from Sirugo and Poland as well as toy train company logos and a photo of Lionel President Kughn on our cover page. Another feature was the series of repair tips by Jim Weatherford. I printed copious amounts of club news for all divisions as well as National TTOS news.

Of course the SW Limited is filled with material which is largely submitted by the members. Many of our members enjoy ALL facets of railroading and of course this includes the prototype, toy trains, model trains, and railroadiana. It was my policy to print as much of the material sent to me as space and budget would permit. Consequently we had some big, beautiful, and informative issues. Each month I thanked my contributors and requested more contributions in other sizes such as S and Standard Gauge.

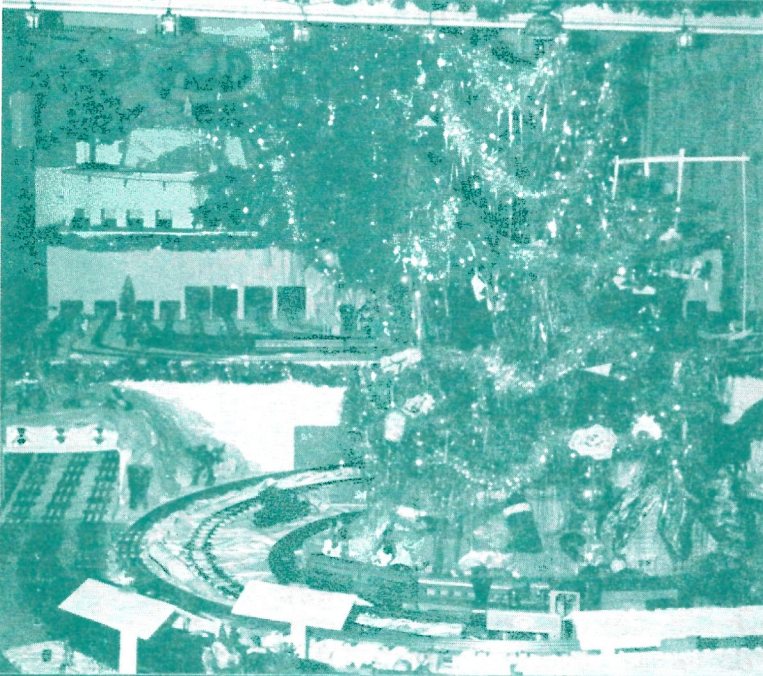
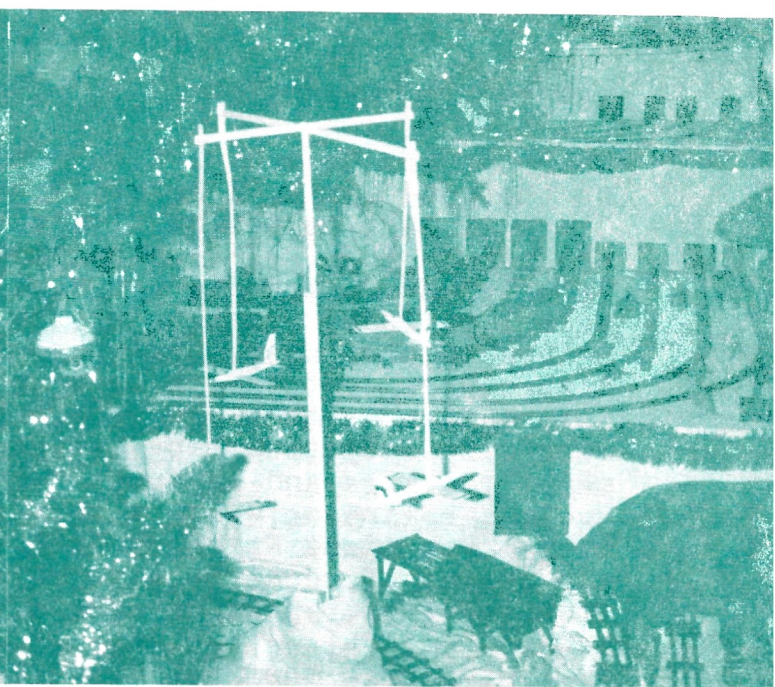
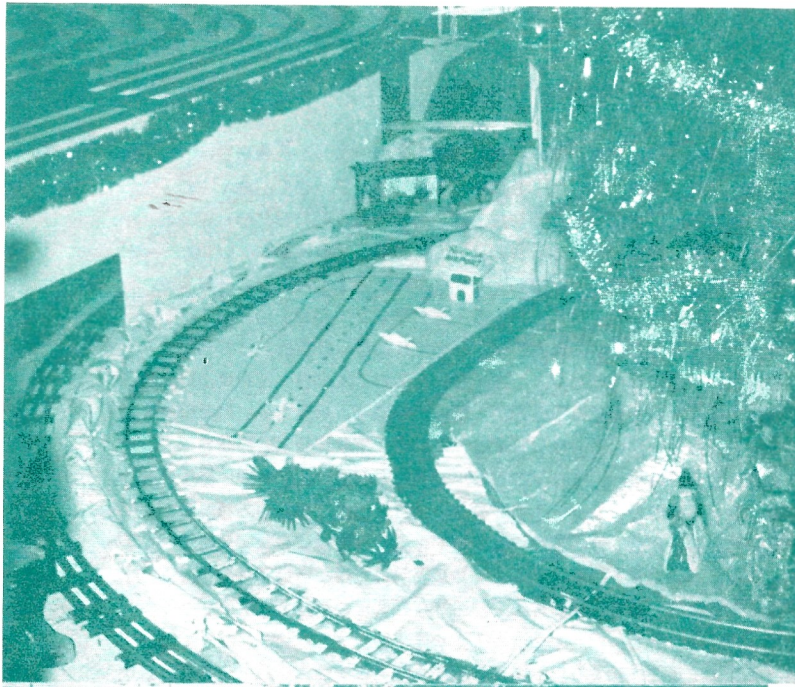
All in all, the overwhelming support of our members was shown to me in the form of the numerous compliments I received on the SW Limited. For those kind words I can't thank the membership enough. As for Mr. Clark, I suggest he pay closer attention to the content of the SW Limited before leveling unfounded criticisms. Sincerely, Steve Marinkovich.

Dear Calvin: While I was President of Western Division, T.C.A., I received publications from all of the other T.C.A. Divisions. I think that The Southwestern Limited ranks among the best in Division Publications. I know that it takes contributions from the membership to make it go, and I feel remiss, that in nearly ten years of membership in T.T.O.S. Southwestern Division, this is my first letter.

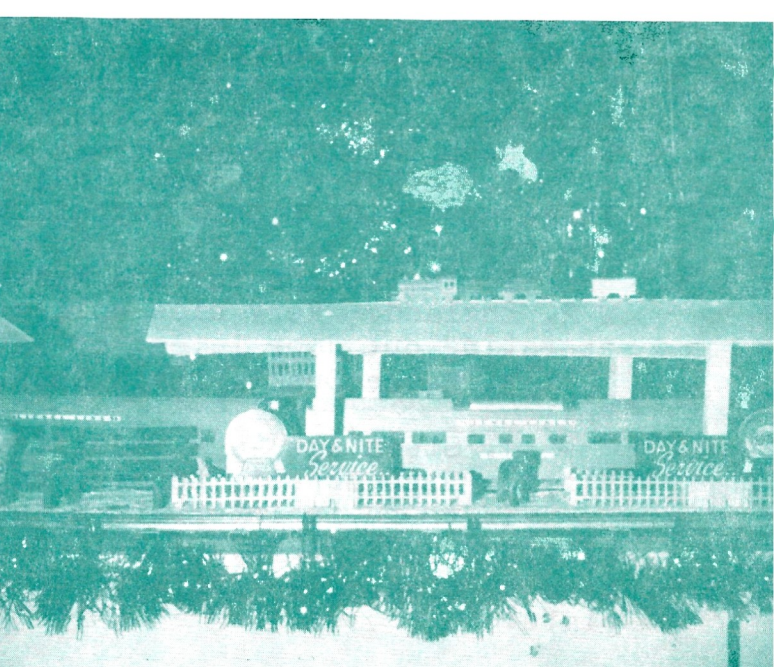
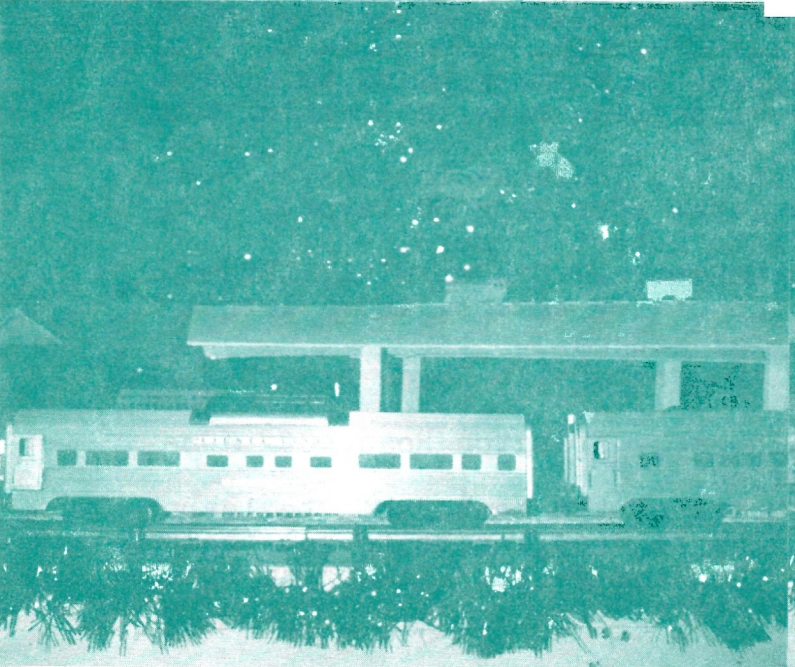
I travel extensively, worldwide, on business, and am always looking for train shops, etc. May I suggest some interesting places I've been lately.----

1. Childers' Museum, Indianapolis, Indiana--They have a very large operating Lionel layout, a large operating HO layout, and the toy train collection of the late Robert Vickers.
2. The London Toy and Model Museum, 23 Craven Hill, London W 2, England. Very nice collection of toy trains, and a large operating outdoor layout of several gauges.
3. Peter Dunk's Train Shop, 109 Portobello Road, London W 11, England.
4. Steam Age -- A model train shop, Abington Road, Off Kensington High Street, London, England.

If there is interest on the part of the membership to learn of other such places, I will be glad to drop a note to you from time to time. The "TRAINUT" John Thousand #4118. TRAINUT-my license plate!



Calvin: Thanks for writing about my Christmas layout. Due to my hand writing, I think you mis read my name-- my name is Riki. Page one and this page show 6 pictures of my layout. A 40 min. video copy is available, please send a blank VHS if you would like a copy. I am producing a 2 rail standard gauge line. The first engine that I am making is the 4-8-8-4 Big Boy. This will also have a pick-up for use with 3 rail track. The engine will have sos, puffing smoke, whistle and other details. The engine and tender will be metal die-cast. The hook-up between the engine and tender will be knuckle couplers. Thanks again, Riki Henneberg, 6776 Glenroy St., San Diego, CA 92120.



Toy Train Operating Society

SOUTHWESTERN
CHARTER DIVISION
No 1.

ON THE
RIGHT TRACK
TO A TTOS MEET



FREE ALL-DAY MEET
ALL CLUBS ARE INVITED

DATE SUNDAY, APRIL 12th, 1987

MUST BE A MEMBER OF A TRAIN CLUB TO BE ADMITTED.
Former SWD members must pay their delinquent dues to enter.

TIME Set up for Sellers: 9 a.m. (Closed Box Rule)
Open for Trading: 10 a.m. to 5 p.m.

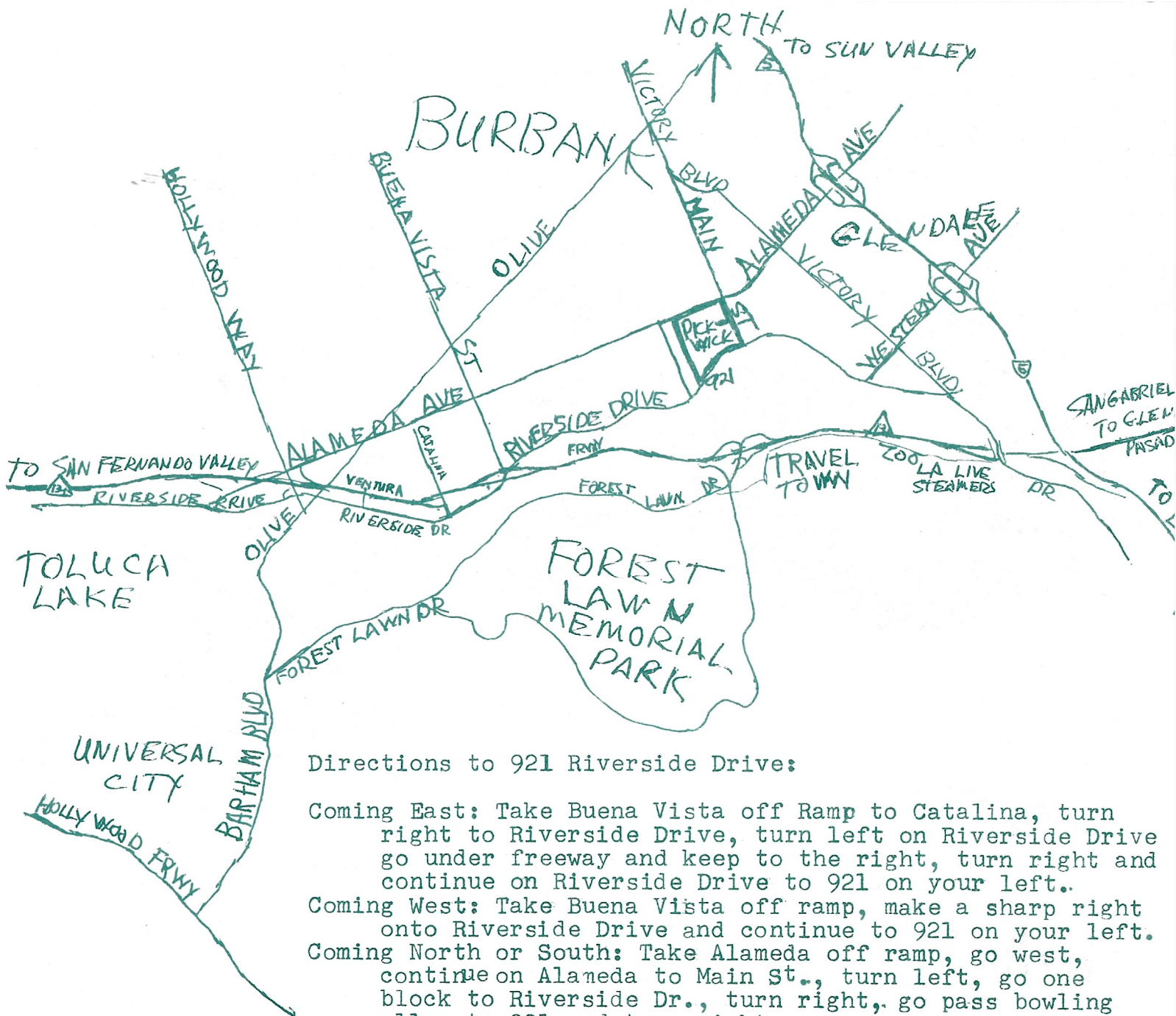
Those members who have prepaid their table reservations for April will have their tables already reserved for them.

PLACE PICKWICK BANQUET HALL, 921 Riverside Drive, Burbank, CA. Our new location has larger quarters with more tables, snack bar with sandwiches salads, and beverages in the adjoining dining room. See map on reverse side for directions.

Please reserve _____ table(s) for the April All Clubs Meet
at \$5.00 per table.

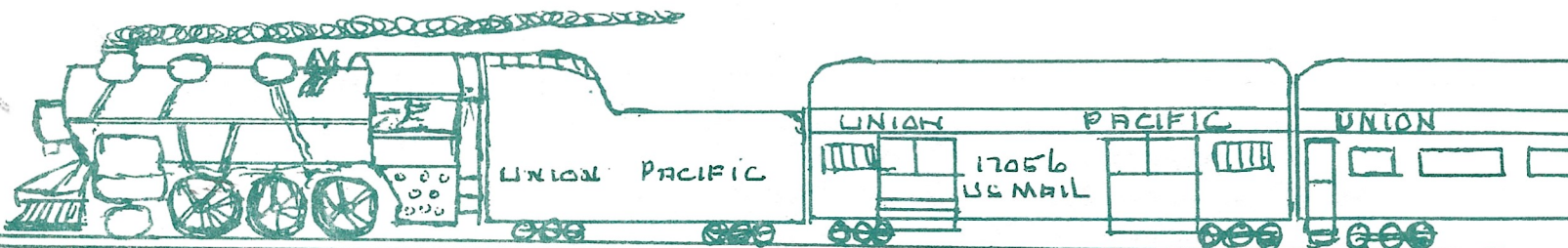
Enclosed please find \$ _____. Make checks payable to
TTOS, SWD #1.

Mail coupon and check to: Sam Mattes, 7253 Pondera Circle,
Canoga Park, CA 91307. (818) 347-4753.



Directions to 921 Riverside Drive:

- Coming East: Take Buena Vista off Ramp to Catalina, turn right to Riverside Drive, turn left on Riverside Drive go under freeway and keep to the right, turn right and continue on Riverside Drive to 921 on your left.
- Coming West: Take Buena Vista off ramp, make a sharp right onto Riverside Drive and continue to 921 on your left.
- Coming North or South: Take Alameda off ramp, go west, continue on Alameda to Main St., turn left, go one block to Riverside Dr., turn right, go pass bowling alley to 921 and turn right.



.....A TRAIN OF THOUGHT BY THE EDITOR

Hi Everyone,

I would like to say some words about safety this month. We all know that when approaching a non-operating railroad crossing we should stop, look and listen before crossing the tracks. When we see red lights flashing we know a train is coming and we must stop at a crossing and at a crossing with operating gates we are prevented from crossing the tracks when a train has activated the gates.

But how many of us take these precautions in our everyday driving and pedestrian movements? Are you aware of how many drivers and pedestrians are disobeying traffic laws?

How many times have you seen a car run a stop sign, slow down and drive through or make a right turn without stopping? Or have seen a pedestrian, jogger, or bicyclist cross a street without obeying the traffic laws?

Personally, I have witnessed all of the above more than I ten times a week during the last month.

As I was walking across a marked, crosswalk intersection with operating traffic signals and pedestrian signals, a car proceeded to make a left hand turn in front of me when I was about five feet from the center of a four lane street. I had to make an abrupt turn to keep from being hit. Another week I was with a group of pedestrians starting to cross the street after the signal had changed to green and a car failing to stop, continued through the intersection and I had to warn one man to stop to keep from being hit!

These near misses have alerted me to be very cautious at any intersection whether I am driving or walking. Some rules I now follow:

1. When a light changes to green or after making a complete stop at a stop sign, I first look both ways and make sure cars approaching the intersection are coming to a stop.
2. As a pedestrian I do the same procedure before starting to walk across a street and also watch for turning cars to be sure I am clear of their path.
3. When the light is red I do not walk, period.

I hope all of you will do the same. Especially remind any children in your family and their friends of the importance of obeying traffic laws--THE LIFE YOU SAVE, MAY BE YOUR OWN!

Think about it--If we have less accidents the insurance companies might even lower their premiums. At least you will not be paying medical bills for an injury that could have been avoided.

Last month I listed the board of directors for 1987. Please note spelling of James Menichetti and add Bruce Lazarus and Bob Ziegler. Also Ralph Johnson is Past President and add Phil Haffen, National President, at large.

Calvin
7

MODEL RAILROADERS' DIGEST

A NATIONAL MAGAZINE

Published in the Interest of the Tinsplater
107 East Broadway, Hawthorne, Calif.

10c the Copy — Published Monthly — \$1.00 the Year

LEE R. RIDGMAN—ROY MARQUARD.....Editors
Marie Ridgman—Zenith Marquard..... Secretaries

The Part Scale and Mostly Tinsplate R. R.

By HARRY E. BARRETT
P. S. & M. T. P. R. R. CO.
Part Scale, Mostly Tinsplate R. R.
49 Pleasant Street
Concord, New Hampshire

Dear Lee:

I intended to do this before, but better late than never. My check for \$1.00 is enclosed for a year's subscription to the DIGEST. Congratulations on your magazine exclusively for tinsplaters.

Here are the answers to the questions that you wanted:

No. 1—I am general manager, owner, operator, president, and what have you of the P. S. & M. T. R. R. R. (Part Scale and Mostly Tinsplate) once known as the Barrett Lines.

No. 2—I am an active tinsplater—more about that later.

No. 3—Electric O gauge is my standard.

No. 4—Lionel locomotives are used exclusively.

No. 5—I prefer Lionel steam locos and have the following: 1—No. 258 steam type; 2—No. 262 steam type, 1 No. 254 electric type (this loco is being converted into a Deisel switcher by the removal of the half inch high pantagraph and the substitution of roof tanks and running boards).

No. 6—I prefer the 3000 series of American Flyer passenger cars for looks and economy. 13 of these on my lines with one converted to an old style open vestibule coach.

No. 7—I prefer American Flyer freight cars but have none. I had a chance to buy the largest Lionel freight cars for a dollar apiece at a sale and have about 14.

No. 8—My age will be 26 on July 1, 1936. Married five years and a railroading fool! My job is supervisor of loan and surrender

divisions in the home office of a life and accident insurance company.

Those are all the questions that you wanted answered, but you are going to get more than you bargained for.

Some fifteen years ago, I received my first electric train, with an Ives cast iron steam type loco., O gauge. Well, kids are kids and the loco went the way of all cast iron toys. Then I had a Lionel standard gauge outfit with a No. 33 electric type loco. In those days I didn't have electricity and the dry cells did not last long. I determined then that when I grew up I was going to have trains that ran. The Barrett Lines was the outcome about ten years ago, but has been defunct for the past two years. Now, however, the P. S. & M. T. P. R. R. has been organized and work is going ahead rapidly.

My road derives its name (the P. S. part) from the fact that I have a 1 1/4 scale street car system. A single truck Birney Safety Car is in operation and a double truck car is on order to take care of the new territory soon to be covered by the street car system. Overhead trolley is used with good success. I will be glad to give pointers on this power supply if anyone is interested.

Lionel automatic couplers are automatic in name only. For this reason, and also because they give a much better appearance, I am going to equip my rolling stock with solid scale model couplers, which can be bought for a very little. I believe that I can get them at the price of FOUR PAIR FOR 50c. This is far cheaper than you can buy replacement couplers of Lionel manufacture.

Inter-Mountain and Pacific R R.

By O. F. McKeon
1167 Rhode Island Street
San Francisco.

The officials of this road especially those in the motive power department, thought that the advance information on Lionel's 1936 line as it appeared in the Digest was worth a year's subscription by itself. However, we wished they had selected a loco which is not identified with one railroad like Pennsy K-4 with its Belpaire fire-box. But they say every rose has its thorn. Anyhow we can see that the trend is more and more towards what we want.

When we become dissatisfied with what we have we should look back a little and see how things are really coming our way after all. When this writer started this hobby six years ago, scale rail was \$12.50 per hundred feet, now it is about \$3.50. Scale trucks, if you wanted them, were \$4.50 pair, now they are less than \$2.00. If you wanted tinsplate track you had to pay the retail store price of 25c and there was no place you could get it for less. Everything was higher and not so well adapted to a large layout as now. If you wanted to build a car of your own you had to buy a flat car and then wreck it for the trucks and couplers.

In order to get good looking passenger cars, I used to cut the vestibules off of two coaches and then solder them together in order to get the proper length.

In this country Model railroading is just in its infancy, but it is growing fast and incidentally, I want to point out that the Model Railroaders' Digest is going to grow with it.

At present it appears on the surface that scale models are the most popular branch of the hobby but you shall see that what is called tinsplate will surpass it in the number of followers and will also surpass it in the fun to be had.

When Lionel brought out its Union Pacific Steamliner, did any of the scale model builders try to compete with it? No, they didn't, that "tinsplate" job stopped them. And now you can see Lionel streamliners on nearly all the big scale club layouts. The same is true of the Hiawatha locomotive. This sort of thing is going to keep

(Continued on Page 6)

AUCTION REPORT

Christie's East The Gasque Collection of Trains

On November 8th and 9th Christie's East auctioned an astonishing collection of 4,000 toy trains and accessories from the collection of the late Charles W. Gasque. Mr. Gasque's passion for trains began in earnest in the late 1960's and over the years he built up an extremely fine collection of trains by American and European manufacturers including Lionel-Boucher, American Flyer, Carette, Marx, Ives, Marklin, Voltamp and Bing.

One of Christie East's largest auctions ever, there were over 800 lots including complete train sets, single trains, lights, switches, terminuses, bridges and hills, the entire collection being in perfect to near-perfect condition.

The top lot was the Lionel Standard Gauge Green State Set c. 1929, which brought \$12,100. \$7,150 was paid for the Boucher Blue Comet passenger set, also dating from 1929 (photo 1).

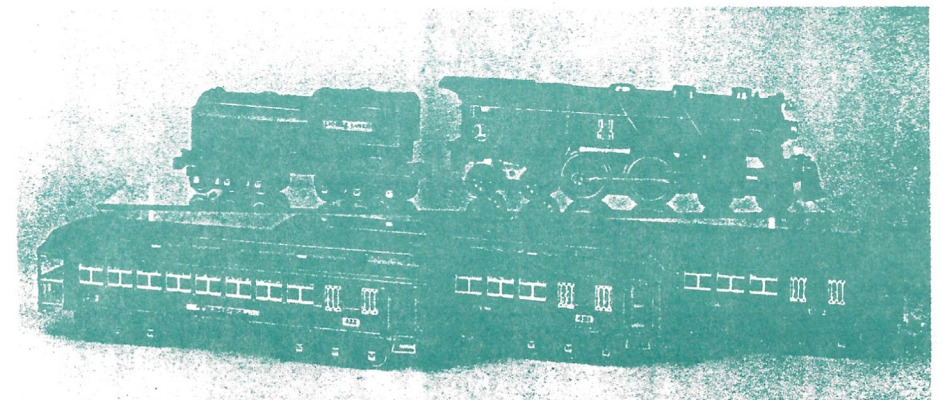
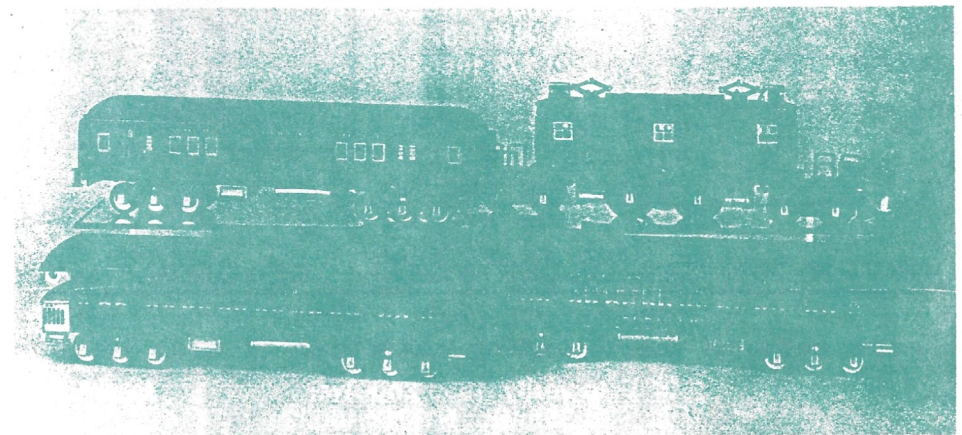
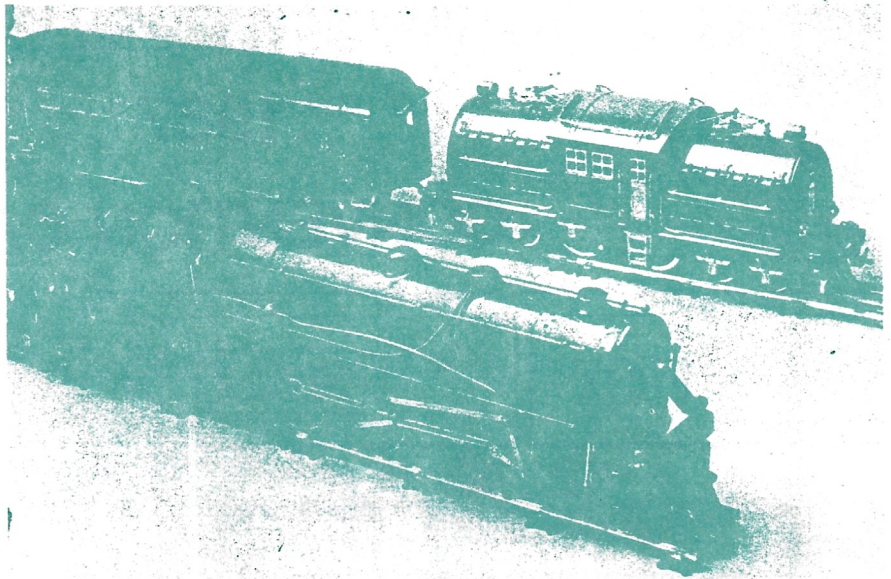
Among the American Flyer Wide Gauge trains was a 1933 locomotive and tender, club, pullman and observation cars in brilliant green with red roofs, \$1,320 (photo 2). The President's Special Set consisting of locomotive and three cars, c. 1927, realized \$3,300 (photo 3).

A Lionel Standard Gauge Blue Comet Set, c. 1935 with locomotive tender and three cars sold for \$3,520 (repainting on the locomotive and tender, locomotive rewheeled). (Photo 4.) The sale netted a total of \$370,342.

(Prices include 10% buyer's premium)

Submitted by
Doug Pickard

Collectors' SHOWCASE (ISSN 0744-5989) is published bi-monthly by Accent Studios, 1018 Rosecrans, San Diego, CA 92106, telephone (619) 222-0386. Second-class postage paid at San Diego, CA and at additional mailing offices. Contents copyright 1987 **Collectors' SHOWCASE**, all rights reserved. **POSTMASTER:** Send address changes to **Collectors' SHOWCASE**, P.O. Box 27948, San Diego, CA 92128.



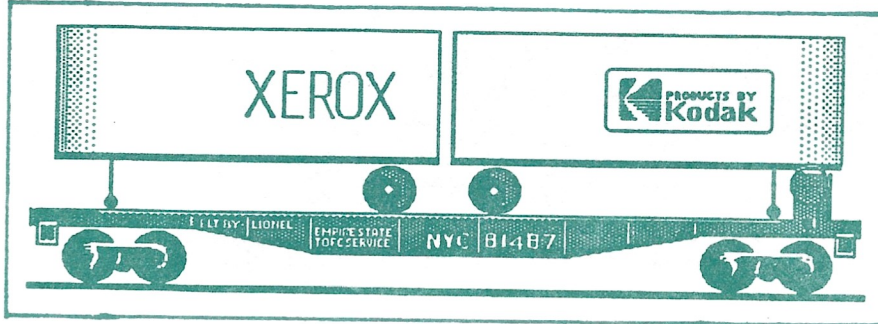


Toy Train Operating Society

1987

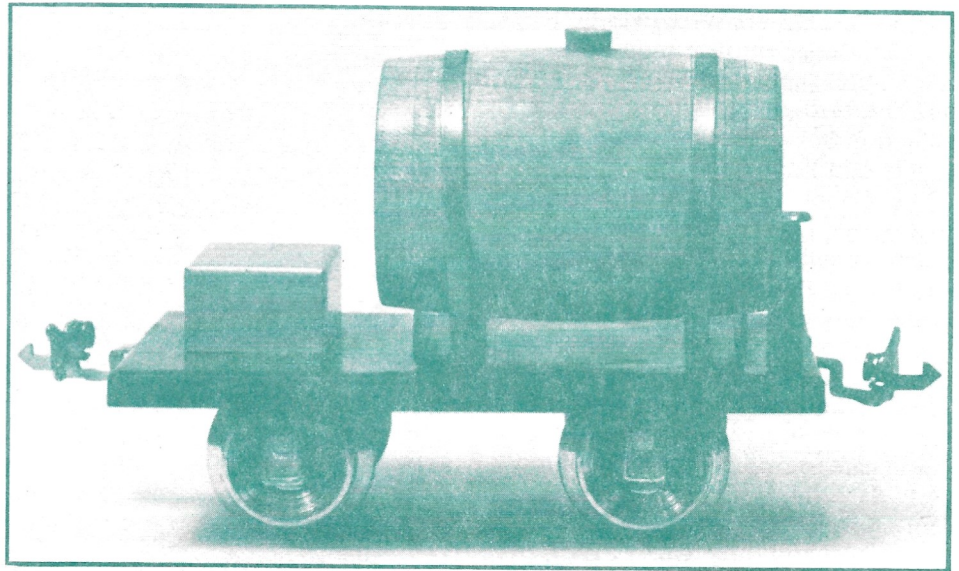
DEADLINE:
MAY 20, 1987

CONVENTION CARS



100% LIONEL "O" GAUGE
PIGGY-BACK FLAT CAR
WITH "KODAK" AND
"XEROX" VAN TRAILERS.
DIECAST SPRUNG TRUCKS
AND AUTOMATIC COUPLERS.
PRODUCTION LIMITED TO
PRE-ORDERS ONLY!!!

100% RICHART MINE TRAIN
TANK CAR IN STANDARD
GAUGE. HEAVY STEEL
CONSTRUCTION WITH A
REAL WOODEN GENESSEE
BEER KEG FOR WATER.
YOU MAY ALSO ORDER
THE FOUR DRIVE WHEEL
MINE LOCOMOTIVE FOR
THE SEVEN UNIT TTOS
MINE TRAIN. DEADLINE
FOR ALL ORDERS IS NO
LATER THAN MAY 20th.
NO LATE ORDERS.



-----cut here-----

CONVENTION CAR ORDER FORM. DEADLINE: MAY 20, 1987. NO EXCEPTIONS.

Please reserve the following quantities of each item for me and (choose one):

() Ship them to me, OR () I'll pick them up in Rochester

_____ LIONEL "O" CARS @ \$36 each

_____ MINE LOCO'S @ \$145 each

_____ RICHART TANKERS @ \$35 each

TOTAL ORDER \$ _____

All prices include domestic shipping by U.P.S. Foreign orders please add postage.
Make out your U.S. check or International Postal Money Order to: T.T.O.S. and
send it, with this order form to: 25 West Walnut Street, Pasadena, CA 91103.

NAME _____ DATE _____

STREET ADDRESS (no P.O. boxes) _____

CITY _____ STATE/PROV. _____ COUNTRY _____ ZIP _____

1987--BOARD OF DIRECTOR'S PROFILE--VICE PRESIDENT

Greetings, I am Sam Mattes and I have taken this opportunity to write my profile in order to convey a couple of thoughts. I joined TTOS around 1978 when a great man named John King passed up the opportunity to sell me assorted trains at high prices by inviting me to a TTOS meeting. From 1979 I have been on the Board of Directors and Tables Chairman.

I collect all Lionel Trains that I don't already have. I operate many of my trains on a 12' by 16' layout. There are many reasons why I enjoy train collecting. To began with train collecting for me has been a family activity. My wife Lily and children--Carolyn 15 and Michael 13--have joined me at almost every meeting where they have helped me and the club. I also enjoy train collecting because of the individuals involved. Train collectors are interesting and sincere individuals--many of which have become good friends over the years. Finally train collecting gives me an escape from my job as a Congressional Investigator for the United States General Accounting Office (GAD).

I am excited about our recently elected Board of Directors and Officers as well as our new location. I believe TTOS SW with its current leadership and new meeting hall, which offers not only a bright, large hall, but also a coffee shop, bowling alley, and ice skating rink can really make train collecting an enjoyable activity where an individual or a family can spend a very relaxing afternoon in an otherwise very hectic world.

Our club is so fortunate to have Sam as our Vice President who can step in where ever needed to help President Gary and our division.



Toy Train Operating Society

25 West Walnut Street, Suite 408
Pasadena, California 91103

1987

APPLICATION FOR MEMBERSHIP

TTOS was formed to further the toy train hobby and to promote fellowship. This application, if accepted by the Society, automatically makes you a member and you will begin receiving publications immediately. TTOS dues for 1987 are \$5 per quarter plus a one-time \$15 initiation fee. Please pay the appropriate amount shown below for the quarter in which you join. Please do not send cash. All funds should be paid in U.S. funds drawn on a U.S. bank or by International Postal Money Order.

| | | | |
|--------------------------------------|------|---|------|
| January, February or March 1987..... | \$35 | July, August or September 1987 | \$25 |
| April, May or June 1987 | \$30 | October, November or December 1987..... | \$20 |

I hereby subscribe to the purposes of the Toy Train Operating Society and agree to abide by the bylaws, policies and regulations. (PLEASE PRINT CLEARLY.)

NAME _____ BIRTHDATE _____

ADDRESS _____ PHONE () _____

CITY _____ County _____ STATE _____ ZIP _____

SIGNATURE _____ SPONSOR _____

FAMILY MEMBERS

You may also enroll your spouse and/or children, ages 9 to 18, as family members if you wish. There is no initiation fee for them, and the dues are \$5 for 1987 but are not pro-rated for parts of the calendar year. Family members are entitled to all rights and privileges of membership except that they may not vote nor run for elected office nor will they receive separate TTOS publications. They may join as many TTOS Divisions as they wish, subject to the policies and rules of each.

SPOUSE _____ CHILD # 1 _____ BIRTHDATE _____

CHILD # 2 _____ BIRTHDATE _____ CHILD # 3 _____ BIRTHDATE _____

CHILD # 4 _____ BIRTHDATE _____ CHILD # 5 _____ BIRTHDATE _____

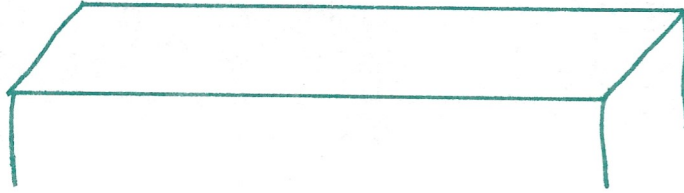
TTOS BADGES

TTOS badges are 1½" in diameter in six-color cloisonne. You and each of the members of your family that you enroll are entitled to a badge for \$5 each.

Summary and amounts of enclosed fees:

| | |
|---------------------------------|-----------------|
| My membership fees for 1987 | \$ _____ |
| _____ Family members @ \$5 each | \$ _____ |
| _____ TTOS Badges @ \$5 each | \$ _____ |
| TOTAL ENCLOSED | \$ _____ |

Reserve Your Tables Now For April



Dear Sam,

Please reserve _____ table(s) for April

regular Southwestern Division #1 meets at Pickwick, Burbank. I understand that the cost is \$5.00 per table per month.

Enclosed please find \$_____. Make checks payable to: TTOS.

Mail check to: Sam Mattes
7253 Pondera Circle
Canoga Park, CA 91307

(818) 347-4753



Toy Train Operating Society

Southwestern Division No. 1

APPLICATION FOR

PRO-RATED DUES

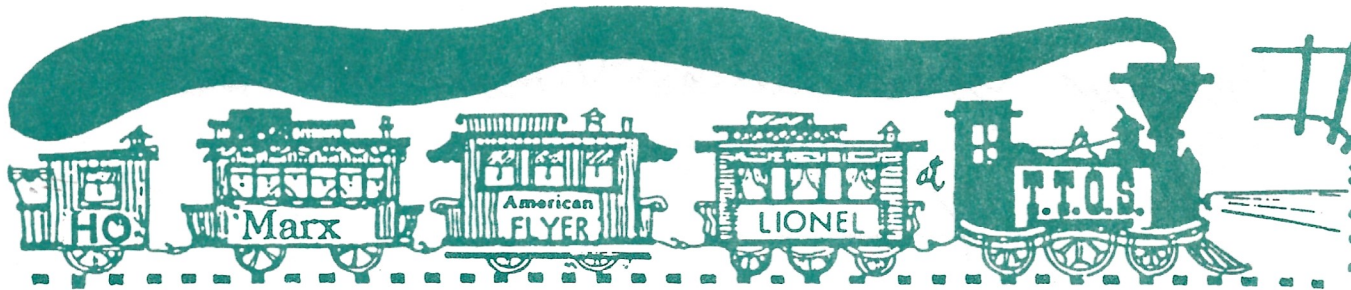
SOUTHWESTERN MEMBERSHIP

| | |
|---------------|---------|
| Jan/Feb/Mar | \$ 5.00 |
| Apr/May/June | \$ 3.00 |
| July/Aug/Sept | \$10.00 |
| Oct/Nov/Dec | \$ 8.00 |

TTOS SOUTHWESTERN DIVISION dues are \$10 for the fiscal year of July 1 through the following June 30. Dues are considered late and subject to a \$5.00 delinquent fee if not paid by July 31. Please make out your check payable to TTOS SOUTHWESTERN DIVISION for the amount shown in the Pro-Rated Table. Send your check with application to: Jim Selvius, Treasurer, 640 Pinehurst Avenue, Placentia, CA 92670.

I hereby subscribe to the purposes of the TTOS SOUTHWESTERN DIVISION 1 and agree to abide by the bylaws.. (PLEASE PRINT CLEARLY):

NAME _____ TTOS # _____
 ADDRESS _____ (Current members only)
 PHONE(____) _____
 CITY _____ STATE _____ ZIP _____
 SPONSOR _____ SIGNATURE _____
 (New Members Only) (Applicant)



THE CENTRAL CALIFORNIA DIVISION
OF THE TOY TRAIN OPERATING SOCIETY

SPRING TOY TRAIN MEET

10:00 AM TO 4:00PM, SATURDAY
MARCH 28th, 1987 IN THE
FIRST CHRISTIAN CHURCH,
1600 "S" ST., BAKERSFIELD, CA.
BUY, SELL, TRADE—OPEN TO THE PUBLIC!!

\$1 ADMISSION CHARGE
SELLER'S TABLES \$6 EACH
RESERVED TABLES AVAILABLE

INFOR. CALL:
FRED (209)674-2313
BOB (805)832-4985

RESV'D TABLES:
TTOS—CEN CAL
PO BOX 151
MADERA, CA.,
93639

NEWS

Central California Division of TTOS Spring Toy Train Meet,
10-4 Saturday, March 28. See flyers page for details.

5th Annual Allied Model Trains Toys and Train Auction, Sunday,
March 29, Masonic Lodge, 50 W. Duarte Rd., Arcadia, CA,
9-4, admission free, call Allen Drucker for details,
213-475-0463.

Western States Toy & Hobby Show, April 4-8, Los Angeles County
Fairgrounds, Pomona, CA. For additional information con-
tact: WST&H Representatives Assn: 11100 Valley Blvd., Suite
340-20, El Monte, CA 91731, (818) 442-1635.

Southern California Scenic Railway Assn., Inc., a non-profit
CA Corp, is undertaking the restoration of the historic
exhibits at Travel Town, Griffith Park, in cooperation
with L. A. Dept. of Recreation and Parks. It is planned
to restore to operating condition as many of the units as
possible. The first unit on which work is already under way
is the AT&SF Railway Motorcar ("Doodlebug") M177 c. 1929.
If interested contact: C. R. (Chell) Hurdle, PR Mgr., 7414
S. Lynalan Ave., Whittier, CA 90606.

ORDER BOARD ORDER FORM

Albert R. Bailey, Order Board Editor
1235 S. Victory Blvd., Burbank CA 91502

Please place the following classified ad in the first available Order Board. I'll type or
print legibly, otherwise I risk having the information published incorrectly.

Name _____ TTOS # _____
Address _____
City _____ State _____ Zip _____
Phone (if wanted included in ad) _____



MAR. 15 SUNDAY, SW MEET, 11 a.m.
 Pickwick Banquet Hall,
 921 Riverside Dr., Burbank, CA

MAR. 18, Wed., SW Board Meeting,
 Coral Cafe, 3321 W. Burbank Blvd.
 Burbank, 6 p.m. Guests no-host
 dinner..

APR. 12, SUNDAY, SW ALL CLUBS MEET:
 Sellers 9 a.m., Buyers 10 a.m.
 Pickwick, 921 Riverside Dr.

MAY 10, Sunday, SW Meet, Pickwick
 13, Wed., SW Board Meeting

JUN, 14, Sunday, SW Meet, Pickwick
 17, Wed., SW Board Meeting

JUL. 12, Sunday, SW Meet, Pickwick
 15, Wed., SW Board Meeting

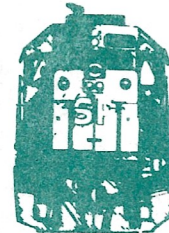
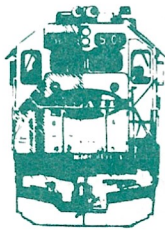
AUG. 16, Sunday, SW Meet, Pickwick
 19, Wed., SW Board Meeting

SEP. 13, Sunday, SW Meet, Pickwick
 16, Wed., SW Board Meeting

OCT. 11, Sunday, SW Meet, Pickwick
 14, Wed., SW Board Meeting

NOV. 20, 21, 22 CAL-STEWART Meet,
 Pasadena Convention Center
 25, Wed., SW Board Meeting

DEC. 13, Sunday, SW Meet, Pickwick
 Annual Christmas Party, Santa
 Claus, Bring the whole family
 No Board Meeting Planned



Southwestern Division No. 1 Toy Train Operating Society

A Non-Profit Corporation
 25 West Walnut Street, Suite 408
 Pasadena, California 91103

BULK RATE
 U.S. POSTAGE
 PAID
 LA VERNE, CA
 PERMIT NO. 237

TIME DATED MATERIAL

